

# Ohio County Profiles

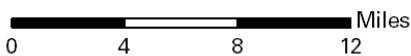
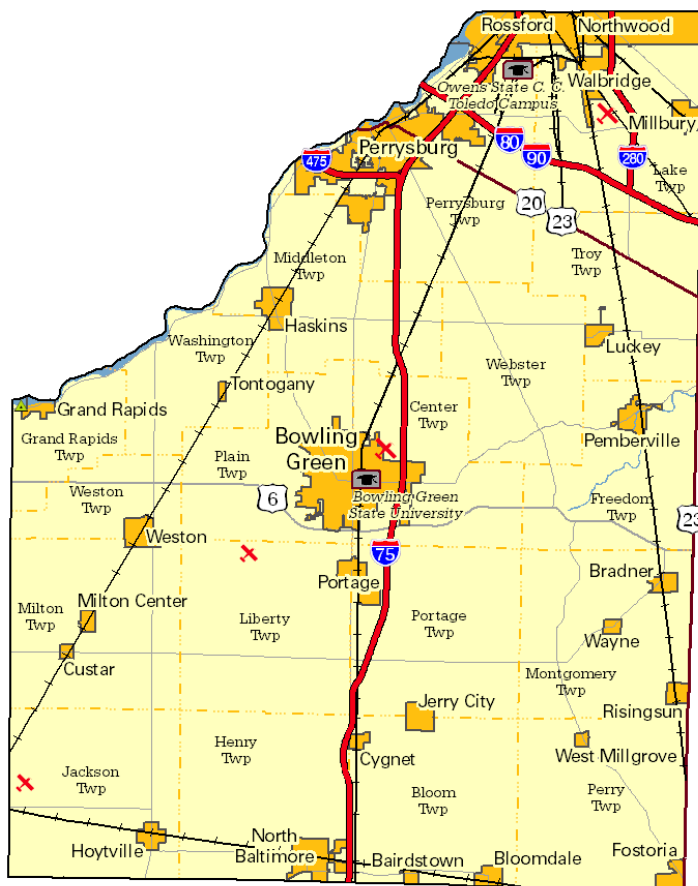


Department of  
Development

Prepared by the Office of Policy, Research and Strategic Planning

## Wood County

**Established:** Act - April 1, 1820  
**2009 Population:** 125,380  
**Land Area:** 617.4 square miles  
**County Seat:** Bowling Green City  
**Named for:** Colonel E.E. Wood, War of 1812



### Taxes

Taxable value of real property	\$2,751,401,720
Residential	\$1,938,845,270
Agriculture	\$135,126,240
Industrial	\$182,043,800
Commercial	\$495,380,860
Mineral	\$5,550
Ohio income tax liability	\$104,974,280
Average per return	\$1,840.69

### Land Use/Land Cover

	Percent
Urban (Residential/Commercial/Industrial/Transportation and Urban Grasses)	9.42%
Cropland	80.38%
Pasture	3.51%
Forest	4.47%
Open Water	0.90%
Wetlands (Wooded/Herbaceous)	1.19%
Bare/Mines	0.13%

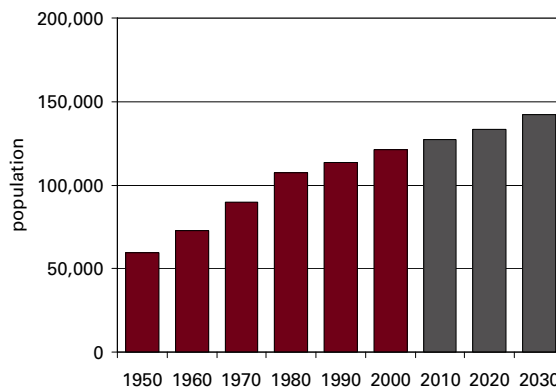
### Largest Areas

	Census 2000	Est. 2009
Bowling Green city	29,710	28,775
Perrysburg city	17,685	17,696
Perrysburg twp	12,836	13,219
Rossford city	6,438	6,416
Lake twp UB	6,069	6,309
Northwood city	5,488	5,549
Troy twp UB	3,357	3,597
North Baltimore village	3,363	3,362
Walbridge village	3,103	3,116
Middleton twp UB	1,965	2,380

UB: Unincorporated Balance

### Total Population

Census	Estimated
1800	2001
1810	2002
1820	2003
1830	2004
1840	2005
1850	2006
1860	2007
1870	2008
1880	2009
1890	Projected
1900	2010
1910	2020
1920	2030
1930	
1940	
1950	
1960	
1970	
1980	
1990	
2000	



<b>Population by Race</b>	<b>Number</b>	<b>Percent</b>
Total Population	121,065	100.0%
White	114,610	94.7%
African-American	1,733	1.4%
Native American	241	0.2%
Asian	1,170	1.0%
Pacific Islander	17	0.0%
Other	1,890	1.6%
Two or More Races	1,404	1.2%
Hispanic (may be of any race)	4,047	3.3%
<b>Total Minority</b>	<b>8,164</b>	<b>6.7%</b>

<b>Educational Attainment</b>	<b>Number</b>	<b>Percent</b>
Persons 25 years and over	71,551	100.0%
No high school diploma	8,150	11.4%
High school graduate	24,887	34.8%
Some college, no degree	14,602	20.4%
Associate degree	5,177	7.2%
Bachelor's degree	11,347	15.9%
Master's degree or higher	7,388	10.3%

<b>Family Type by Employment Status</b>	<b>Number</b>	<b>Percent</b>
Total Families	29,898	100.0%
Married couple, husband and wife in labor force	14,593	48.8%
Married couple, husband in labor force, wife not	4,977	16.6%
Married couple, wife in labor force, husband not	1,449	4.8%
Married couple, husband and wife not in labor force	3,539	11.8%
Male householder, in labor force	1,309	4.4%
Male householder, not in labor force	241	0.8%
Female householder, in labor force	2,998	10.0%
Female householder, not in labor force	792	2.6%

<b>Household Income in 1999</b>	<b>Number</b>	<b>Percent</b>
Total Households	45,192	100.0%
Less than \$10,000	3,535	7.8%
\$10,000 to \$19,999	5,161	11.4%
\$20,000 to \$29,999	5,967	13.2%
\$30,000 to \$39,999	5,426	12.0%
\$40,000 to \$49,999	5,101	11.3%
\$50,000 to \$59,999	4,532	10.0%
\$60,000 to \$74,999	5,204	11.5%
\$75,000 to \$99,999	5,258	11.6%
\$100,000 to \$149,999	3,551	7.9%
\$150,000 to \$199,999	661	1.5%
\$200,000 or more	796	1.8%
<b>Median household income</b>	<b>\$44,442</b>	

<b>Population by Age</b>	<b>Number</b>	<b>Percent</b>
Total Population	121,065	100.0%
Under 6 years	8,418	7.0%
6 to 17 years	20,162	16.7%
18 to 24 years	20,934	17.3%
25 to 44 years	32,681	27.0%
45 to 64 years	25,710	21.2%
65 years and more	13,160	10.9%
<b>Median Age</b>	<b>32.6</b>	

<b>Family Type by Presence of Own Children Under 18</b>	<b>Number</b>	<b>Percent</b>
Total Families	29,898	100.0%
Married-couple families with own children	11,333	37.9%
Male householder, no wife present, with own children	899	3.0%
Female householder, no husband present, with own children	2,428	8.1%
Families with no own children	15,238	51.0%

<b>Poverty Status in 1999 of Families By Family Type by Presence Of Related Children</b>	<b>Number</b>	<b>Percent</b>
Total Families	29,898	100.0%
Family income above poverty level	28,497	95.3%
Family income below poverty level	1,401	4.7%
Married couple, with related children	281	20.1%
Male householder, no wife present, with related children	147	10.5%
Female householder, no husband present, with related children	682	48.7%
Families with no related children	291	20.8%

<b>Ratio of Income in 1999 To Poverty Level</b>	<b>Number</b>	<b>Percent</b>
Population for whom poverty status is determined	113,406	100.0%
Below 50% of poverty level	5,268	4.6%
50% to 99% of poverty level	5,635	5.0%
100% to 149% of poverty level	6,809	6.0%
150% to 199% of poverty level	8,300	7.3%
200% of poverty level or more	87,394	77.1%

<b>Residence in 1995</b>	<b>Number</b>	<b>Percent</b>
Population 5 years and over	114,025	100.0%
Same house in 1995	60,890	53.4%
Different house, same county	20,968	18.4%
Different county, same state	23,428	20.5%
Different state	7,477	6.6%
Puerto Rico or U.S. islands	41	0.0%
Foreign country	1,221	1.1%

## Travel Time To Work

	Number	Percent
Workers 16 years and over	61,207	100.0%
Less than 15 minutes	23,012	37.6%
15 to 29 minutes	24,475	40.0%
30 to 44 minutes	8,364	13.7%
45 to 59 minutes	1,935	3.2%
60 minutes or more	2,098	3.4%
Worked at home	1,323	2.2%

**Mean travel time** 20.1 minutes

## Housing Units

	Number	Percent
Total housing units	47,468	100.0%
Occupied housing units	45,172	95.2%
Owner occupied	31,892	67.2%
Renter occupied	13,280	28.0%
Vacant housing units	2,296	4.8%

## Year Structure Built

	Number	Percent
Total housing units	47,468	100.0%
Built 1995 to March 2000	4,505	9.5%
Built 1990 to 1994	3,425	7.2%
Built 1980 to 1989	5,815	12.3%
Built 1970 to 1979	10,899	23.0%
Built 1960 to 1969	5,510	11.6%
Built 1950 to 1959	4,920	10.4%
Built 1940 to 1949	2,580	5.4%
Built 1939 or earlier	9,814	20.7%

**Median year built** 1971

## Value for Specified Owner-Occupied Housing Units

	Number	Percent
Specified owner-occupied housing units	25,655	100.0%
Less than \$20,000	55	0.2%
\$20,000 to \$39,999	510	2.0%
\$40,000 to \$59,999	1,247	4.9%
\$60,000 to \$79,999	2,619	10.2%
\$80,000 to \$99,999	4,598	17.9%
\$100,000 to \$124,999	4,740	18.5%
\$125,000 to \$149,999	3,734	14.6%
\$150,000 to \$199,999	4,632	18.1%
\$200,000 to \$249,999	1,514	5.9%
\$250,000 to \$499,999	1,724	6.7%
\$500,000 to \$999,999	217	0.8%
\$1,000,000 or more	65	0.3%

**Median value** \$120,000

## House Heating Fuel

	Number	Percent
Occupied housing units	45,172	100.0%
Utility gas	32,000	70.8%
Bottled, tank or LP gas	5,254	11.6%
Electricity	6,710	14.9%
Fuel oil, kerosene, etc	718	1.6%
Coal, coke or wood	331	0.7%
Solar energy or other fuel	140	0.3%
No fuel used	19	0.0%

## Gross Rent

	Number	Percent
Specified renter-occupied housing units	13,085	100.0%
Less than \$100	42	0.3%
\$100 to \$199	405	3.1%
\$200 to \$299	828	6.3%
\$300 to \$399	1,793	13.7%
\$400 to \$499	2,958	22.6%
\$500 to \$599	2,525	19.3%
\$600 to \$699	1,721	13.2%
\$700 to \$799	979	7.5%
\$800 to \$899	388	3.0%
\$900 to \$999	329	2.5%
\$1,000 to \$1,499	423	3.2%
\$1,500 or more	152	1.2%
No cash rent	542	4.1%

**Median gross rent** \$508

Median gross rent as a percentage of household income in 1999 24.9

## Selected Monthly Owner Costs for Specified Owner-Occupied Housing Units

	Number	Percent
Specified owner-occupied housing units with a mortgage	18,299	100.0%
Less than \$400	290	1.6%
\$400 to \$599	1,426	7.8%
\$600 to \$799	3,095	16.9%
\$800 to \$999	3,929	21.5%
\$1,000 to \$1,249	3,797	20.7%
\$1,250 to \$1,499	2,512	13.7%
\$1,500 to \$1,999	1,950	10.7%
\$2,000 to \$2,999	981	5.4%
\$3,000 or more	319	1.7%

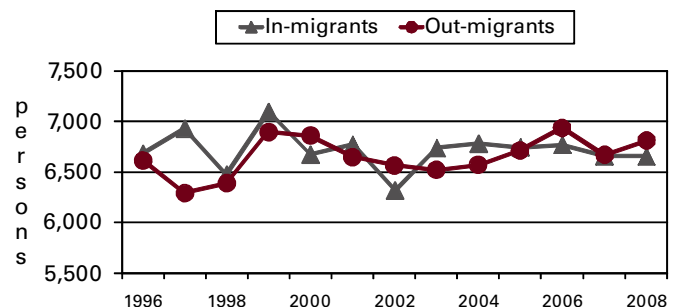
**Median monthly owners cost** \$1,027

Median monthly owners cost as a percentage of household income 19.7

## Vital Statistics

	Number	Rate
Births / rate per 1,000 women aged 15 to 44	1,387	47.5
Teen births / rate per 1,000 females 15-19	101	16.5
Deaths / rate per 100,000 population	952	759.2
Marriages / rate per 1,000 population	756	6.1
Divorces / rate per 1,000 population	379	3.1

## Migration



**Agriculture**

Land in farms (acres)	301,000
Number of farms	1,040
Average size (acres)	289
Total cash receipts	\$124,237,000
Per farm	\$119,459

**Education**

Public schools	46
Students (Average Daily Membership)	19,148
Expenditures per student	\$9,863
Student-teacher ratio	16.1
Graduation rate	93.6
Teachers (Full Time Equivalent)	1,129.7
Non-public schools	9
Students	1,358
4-year public universities	1
Branches	0
2-year public colleges	1
Private universities and colleges	0
Public libraries (Main / Branches)	7 / 4

**Transportation**

Registered motor vehicles	135,679
Passenger cars	87,955
Noncommercial trucks	18,894
Total license revenue	\$3,806,255.63
Interstate highway miles	54.64
Turnpike miles	11.18
U.S. highway miles	61.32
State highway miles	206.86
County, township, and municipal road miles	1,599.46
Commercial airports	4

**Voting**

Number of precincts	97
Number of registered voters	101,891
Voted in 2006 election	65,604
Percent turnout	64.4%

**Health Care**

Physicians (MDs & DOs)	311
Registered hospitals	1
Number of beds	162
Licensed nursing homes	10
Number of beds	830
Licensed residential care	6
Number of beds	346
Adults with employer-based insurance	67.7%
Children with employer-based insurance	76.0%

**State Parks, Forests, Nature Preserves, And Wildlife Areas**

Facilities	6
Acreage	659.69

**Communications**

Television stations	2
Radio stations	2
Daily newspapers	2
Circulation	21,500

**Crime**

Total crimes reported in Uniform Crime Report	3,185
---	-------

**Finance**

FDIC insured financial institutions (HQs)	0
Assets (000)	\$0
Branch offices	40
Institutions represented	13

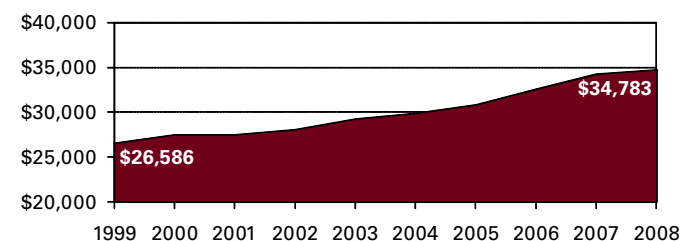
**Transfer Payments**

Total transfer payments	\$654,778,000
Payments to individuals	\$633,606,000
Retirement and disability	\$270,106,000
Medical payments	\$239,109,000
Income maintenance (Supplemental SSI, family assistance, food stamps, etc)	\$35,638,000
Unemployment benefits	\$16,595,000
Veterans benefits	\$8,992,000
Federal education and training assistance	\$55,823,000
Other payments to individuals	\$7,343,000
Total personal income	\$4,347,543,000
Dependency ratio	15.1%

**Federal Expenditures**

Direct expenditures or obligations	\$550,277,309
Retirement and disability	\$252,660,466
Other direct payments	\$189,798,224
Grant awards	\$80,223,743
Highway planning and construction	\$11,699,486
Temporary assistance to needy families	\$7,762,740
Medical assistance program	\$32,524,733
Procurement contract awards	\$7,311,907
Dept. of Defense	\$1,143,104
Salary and wages	\$20,282,969
Dept. of Defense	\$1,069,000
Other federal assistance	\$311,074,596
Direct loans	\$116,237,114
Guaranteed loans	\$68,470,815
Insurance	\$126,366,667

**Per Capita Personal Income**



## Civilian Labor Force

	2005	2006	2007	2008	2009
Civilian labor force	67,700	68,900	69,200	69,000	68,300
Employed	63,900	65,300	65,600	64,400	60,800
Unemployed	3,800	3,500	3,700	4,600	7,500
Unemployment rate	5.6	5.1	5.3	6.7	10.9

## Establishments, Employment, and Wages by Sector: 2008

Industrial Sector	Number of Establishments	Average Employment	Total Wages	Average Weekly Wage
Private Sector	2,755	48,584	\$2,207,448,960	\$874
Goods-Producing	474	15,640	\$1,279,353,487	\$1,573
Natural Resources and Mining	25	383	\$10,298,446	\$517
Constuction	246	2,684	\$135,986,742	\$974
Manufacturing	203	12,573	\$1,133,068,299	\$1,733
Service-Providing	2,281	32,943	\$928,095,473	\$542
Trade, Transportation and Utilities	740	13,014	\$418,435,612	\$618
Information	45	478	\$20,737,363	\$835
Financial Services	301	1,735	\$67,531,129	\$749
Professional and Business Services	363	4,455	\$138,250,796	\$597
Education and Health Services	252	5,277	\$171,075,617	\$623
Leisure and Hospitality	323	6,259	\$70,065,139	\$215
Other Services	253	1,712	\$41,803,515	\$470
Federal Government		241	\$11,102,906	\$886
State Government		3,562	\$184,385,379	\$995
Local Government		7,047	\$265,838,161	\$725

Private Sector total includes Unclassified establishments not shown.

## Change Since 2003

Private Sector	5.8%	3.8%	45.0%	39.8%
Goods-Producing	-9.5%	-7.2%	63.5%	76.1%
Natural Resources and Mining	-13.8%	36.3%	60.9%	17.8%
Construction	-8.6%	-4.9%	4.4%	9.7%
Manufacturing	-10.2%	-8.6%	75.4%	91.9%
Service-Producing	9.6%	10.0%	25.5%	14.1%
Trade, Transportation and Utilities	7.9%	13.1%	28.7%	13.8%
Information	9.8%	-34.1%	-29.1%	7.6%
Financial Services	16.2%	1.8%	22.6%	20.4%
Professional and Business Services	5.2%	7.0%	32.0%	23.3%
Education and Health Services	27.9%	9.0%	25.9%	15.4%
Leisure and Hospitality	17.0%	22.7%	38.4%	12.6%
Other Services	-7.0%	-10.5%	9.0%	21.8%
Federal Government		3.9%	16.1%	11.7%
State Government		1.7%	17.0%	15.0%
Local Government		4.4%	24.2%	18.9%

## Business Numbers

	2004	2005	2006	2007	2008
Business starts	180	223	226	212	187
Active businesses	2,064	2,135	2,171	2,086	2,083

## Major Employers

Bowling Green State University	Govt
Chrysler Group LLC	Mfg
Cooper Standard Automotive Inc	Mfg
First Solar Inc	Mfg
Great Lakes Window Inc	Mfg
Magna Int'l/Norplas Inc	Mfg
Owens Community College	Govt
Owens Illinois Inc	Mfg
Perrysburg Exempted Village Schools	Govt
Walgreen Co	Trade
Wood County Government	Govt
Wood County Hospital Assoc	Serv
WPP PLC/TNS Custom Research	Serv

## Residential

### Construction

	2005	2006	2007	2008	2009
Total units	1,152	651	521	548	128
Total valuation (000)	\$126,344	\$68,991	\$54,626	\$47,516	\$26,214
Total single-unit bldgs	609	452	439	197	128
Average cost per unit	\$139,909	\$127,739	\$109,392	\$137,816	\$204,799
Total multi-unit bldg units	543	199	82	351	0
Average cost per unit	\$75,764	\$56,548	\$80,519	\$58,023	\$0