

Population by Race	Number	Percent
Total Population	47,910	100.0%
White	45,894	95.8%
African-American	893	1.9%
Native American	82	0.2%
Asian	307	0.6%
Pacific Islander	2	0.0%
Other	188	0.4%
Two or More Races	544	1.1%
Hispanic (may be of any race)	342	0.7%
Total Minority	2,235	4.7%

Educational Attainment	Number	Percent
Persons 25 years and over	30,280	100.0%
No high school diploma	5,608	18.5%
High school graduate	13,712	45.3%
Some college, no degree	4,865	16.1%
Associate degree	2,228	7.4%
Bachelor's degree	2,671	8.8%
Master's degree or higher	1,196	3.9%

Family Type by Employment Status	Number	Percent
Total Families	13,164	100.0%
Married couple, husband and wife in labor force	6,550	49.8%
Married couple, husband in labor force, wife not	2,108	16.0%
Married couple, wife in labor force, husband not	673	5.1%
Married couple, husband and wife not in labor force	1,614	12.3%
Male householder, in labor force	533	4.0%
Male householder, not in labor force	77	0.6%
Female householder, in labor force	1,165	8.8%
Female householder, not in labor force	444	3.4%

Household Income in 1999	Number	Percent
Total Households	17,696	100.0%
Less than \$10,000	1,042	5.9%
\$10,000 to \$19,999	1,970	11.1%
\$20,000 to \$29,999	2,202	12.4%
\$30,000 to \$39,999	2,460	13.9%
\$40,000 to \$49,999	2,427	13.7%
\$50,000 to \$59,999	1,903	10.8%
\$60,000 to \$74,999	2,242	12.7%
\$75,000 to \$99,999	2,029	11.5%
\$100,000 to \$149,999	1,032	5.8%
\$150,000 to \$199,999	207	1.2%
\$200,000 or more	182	1.0%
Median household income	\$44,507	

Population by Age	Number	Percent
Total Population	47,910	100.0%
Under 6 years	4,453	9.3%
6 to 17 years	9,265	19.3%
18 to 24 years	3,912	8.2%
25 to 44 years	14,022	29.3%
45 to 64 years	10,411	21.7%
65 years and more	5,847	12.2%
Median Age	34.8	

Family Type by Presence of Own Children Under 18	Number	Percent
Total Families	13,164	100.0%
Married-couple families with own children	5,235	39.8%
Male householder, no wife present, with own children	387	2.9%
Female householder, no husband present, with own children	950	7.2%
Families with no own children	6,592	50.1%

Poverty Status in 1999 of Families By Family Type by Presence Of Related Children	Number	Percent
Total Families	13,164	100.0%
Family income above poverty level	12,462	94.7%
Family income below poverty level	702	5.3%
Married couple, with related children	120	17.1%
Male householder, no wife present, with related children	70	10.0%
Female householder, no husband present, with related children	345	49.1%
Families with no related children	167	23.8%

Ratio of Income in 1999 To Poverty Level	Number	Percent
Population for whom poverty status is determined	46,961	100.0%
Below 50% of poverty level	1,355	2.9%
50% to 99% of poverty level	1,806	3.8%
100% to 149% of poverty level	2,565	5.5%
150% to 199% of poverty level	4,212	9.0%
200% of poverty level or more	37,023	78.8%

Residence in 1995	Number	Percent
Population 5 years and over	44,330	100.0%
Same house in 1995	26,494	59.8%
Different house, same county	11,347	25.6%
Different county, same state	4,294	9.7%
Different state	1,843	4.2%
Puerto Rico or U.S. islands	28	0.1%
Foreign country	324	0.7%

Travel Time To Work

	Number	Percent
Workers 16 years and over	23,582	100.0%
Less than 15 minutes	11,423	48.4%
15 to 29 minutes	7,841	33.2%
30 to 44 minutes	2,185	9.3%
45 to 59 minutes	798	3.4%
60 minutes or more	661	2.8%
Worked at home	674	2.9%
Mean travel time	17.4 minutes	

Housing Units

	Number	Percent
Total housing units	18,682	100.0%
Occupied housing units	17,636	94.4%
Owner occupied	13,127	70.3%
Renter occupied	4,509	24.1%
Vacant housing units	1,046	5.6%

Year Structure Built

	Number	Percent
Total housing units	18,682	100.0%
Built 1995 to March 2000	1,893	10.1%
Built 1990 to 1994	1,588	8.5%
Built 1980 to 1989	1,851	9.9%
Built 1970 to 1979	3,254	17.4%
Built 1960 to 1969	2,104	11.3%
Built 1950 to 1959	2,007	10.7%
Built 1940 to 1949	1,201	6.4%
Built 1939 or earlier	4,784	25.6%
Median year built	1966	

Value for Specified Owner-Occupied Housing Units

	Number	Percent
Specified owner-occupied housing units	10,756	100.0%
Less than \$20,000	26	0.2%
\$20,000 to \$39,999	286	2.7%
\$40,000 to \$59,999	763	7.1%
\$60,000 to \$79,999	2,144	19.9%
\$80,000 to \$99,999	2,481	23.1%
\$100,000 to \$124,999	1,764	16.4%
\$125,000 to \$149,999	1,401	13.0%
\$150,000 to \$199,999	1,249	11.6%
\$200,000 to \$249,999	352	3.3%
\$250,000 to \$499,999	277	2.6%
\$500,000 to \$999,999	13	0.1%
\$1,000,000 or more	0	0.0%
Median value	\$97,000	

House Heating Fuel

	Number	Percent
Occupied housing units	17,636	100.0%
Utility gas	7,556	42.8%
Bottled, tank or LP gas	4,024	22.8%
Electricity	4,316	24.5%
Fuel oil, kerosene, etc	1,149	6.5%
Coal, coke or wood	408	2.3%
Solar energy or other fuel	123	0.7%
No fuel used	60	0.3%

Gross Rent

	Number	Percent
Specified renter-occupied housing units	4,306	100.0%
Less than \$100	26	0.6%
\$100 to \$199	164	3.8%
\$200 to \$299	294	6.8%
\$300 to \$399	630	14.6%
\$400 to \$499	947	22.0%
\$500 to \$599	891	20.7%
\$600 to \$699	539	12.5%
\$700 to \$799	236	5.5%
\$800 to \$899	167	3.9%
\$900 to \$999	50	1.2%
\$1,000 to \$1,499	60	1.4%
\$1,500 or more	104	2.4%
No cash rent	198	4.6%
Median gross rent	\$499	
Median gross rent as a percentage of household income in 1999	21.7	

Selected Monthly Owner Costs for Specified Owner-Occupied Housing Units

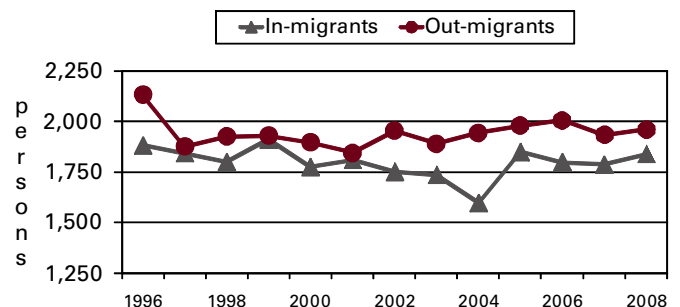
	Number	Percent
Specified owner-occupied housing units with a mortgage	7,555	100.0%
Less than \$400	212	2.8%
\$400 to \$599	980	13.0%
\$600 to \$799	2,014	26.7%
\$800 to \$999	1,710	22.6%
\$1,000 to \$1,249	1,229	16.3%
\$1,250 to \$1,499	765	10.1%
\$1,500 to \$1,999	476	6.3%
\$2,000 to \$2,999	137	1.8%
\$3,000 or more	32	0.4%
Median monthly owners cost	\$856	

Median monthly owners cost as a percentage of household income 19.2

Vital Statistics

	Number	Rate
Births / rate per 1,000 women aged 15 to 44	710	75.4
Teen births / rate per 1,000 females 15-19	95	57.6
Deaths / rate per 100,000 population	394	806.8
Marriages / rate per 1,000 population	360	7.4
Divorces / rate per 1,000 population	193	3.9

Migration



Agriculture

Land in farms (acres)	203,000
Number of farms	990
Average size (acres)	205
Total cash receipts	\$94,069,000
Per farm	\$94,069

Education

Public schools	24
Students (Average Daily Membership)	8,801
Expenditures per student	\$8,557
Student-teacher ratio	17.9
Graduation rate	95.0
Teachers (Full Time Equivalent)	536.3
Non-public schools	3
Students	664
4-year public universities	0
Branches	0
2-year public colleges	0
Private universities and colleges	0
Public libraries (Main / Branches)	1 / 5

Transportation

Registered motor vehicles	61,028
Passenger cars	35,004
Noncommercial trucks	10,709
Total license revenue	\$1,905,005.26
Interstate highway miles	20.55
Turnpike miles	0.00
U.S. highway miles	0.00
State highway miles	143.74
County, township, and municipal road miles	846.65
Commercial airports	1

Voting

Number of precincts	35
Number of registered voters	30,917
Voted in 2006 election	24,083
Percent turnout	77.9%

Health Care

Physicians (MDs & DOs)	51
Registered hospitals	1
Number of beds	133
Licensed nursing homes	4
Number of beds	331
Licensed residential care	1
Number of beds	78
Adults with employer-based insurance	60.6%
Children with employer-based insurance	82.7%

State Parks, Forests, Nature Preserves, And Wildlife Areas

Facilities	2
Acreage	1,997.11

Communications

Television stations	0
Radio stations	1
Daily newspapers	1
Circulation	13,600

Crime

Total crimes reported in Uniform Crime Report	6
---	---

Finance

FDIC insured financial institutions (HQs)	2
Assets (000)	\$266,616
Branch offices	21
Institutions represented	9

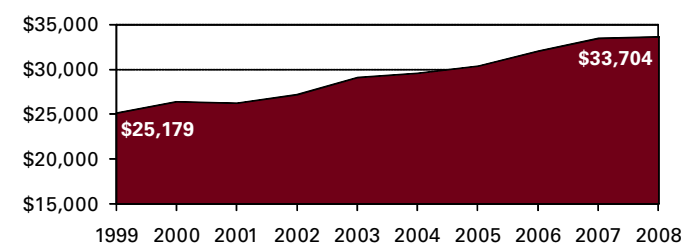
Transfer Payments

Total transfer payments	\$269,408,000
Payments to individuals	\$261,143,000
Retirement and disability	\$111,211,000
Medical payments	\$106,245,000
Income maintenance (Supplemental SSI, family assistance, food stamps, etc)	\$19,736,000
Unemployment benefits	\$8,494,000
Veterans benefits	\$3,974,000
Federal education and training assistance	\$7,319,000
Other payments to individuals	\$4,164,000
Total personal income	\$1,646,524,000
Dependency ratio	16.4%

Federal Expenditures

Direct expenditures or obligations	\$217,525,145
Retirement and disability	\$102,337,980
Other direct payments	\$69,708,655
Grant awards	\$32,208,585
Highway planning and construction	\$2,622,987
Temporary assistance to needy families	\$3,072,012
Medical assistance program	\$18,942,813
Procurement contract awards	\$5,909,087
Dept. of Defense	\$3,927,886
Salary and wages	\$7,360,838
Dept. of Defense	\$0
Other federal assistance	\$125,105,021
Direct loans	\$1,324,744
Guaranteed loans	\$36,413,896
Insurance	\$87,366,381

Per Capita Personal Income



Civilian Labor Force

	2005	2006	2007	2008	2009
Civilian labor force	27,500	28,300	28,400	27,600	26,700
Employed	26,200	27,100	27,000	25,900	23,100
Unemployed	1,300	1,200	1,400	1,700	3,600
Unemployment rate	4.7	4.2	4.8	6.2	13.5

Establishments, Employment, and Wages by Sector: 2008

Industrial Sector	Number of Establishments	Average Employment	Total Wages	Average Weekly Wage
Private Sector	982	26,686	\$1,065,118,865	\$768
Goods-Producing	256	14,557	\$722,660,848	\$955
Natural Resources and Mining	14	123	\$3,720,124	\$581
Constuction	113	1,430	\$65,662,206	\$883
Manufacturing	129	13,004	\$653,278,518	\$966
Service-Providing	726	12,129	\$342,458,017	\$543
Trade, Transportation and Utilities	252	4,936	\$162,521,735	\$633
Information	11	195	\$9,962,703	\$982
Financial Services	94	523	\$18,989,088	\$698
Professional and Business Services	103	2,194	\$49,752,965	\$436
Education and Health Services	75	2,011	\$68,179,871	\$652
Leisure and Hospitality	103	1,609	\$17,135,520	\$205
Other Services	87	658	\$15,869,820	\$464
Federal Government		93	\$4,153,757	\$864
State Government		298	\$15,494,868	\$1,000
Local Government		2,406	\$86,483,611	\$691

Private Sector total includes Unclassified establishments not shown.

Change Since 2003

Private Sector	-0.3%	1.5%	13.2%	11.6%
Goods-Producing	-5.2%	-0.6%	11.5%	12.2%
Natural Resources and Mining	40.0%	53.8%	57.3%	2.5%
Construction	-11.7%	-6.3%	11.3%	18.8%
Manufacturing	-2.3%	-0.3%	11.4%	11.7%
Service-Producing	1.5%	4.1%	16.7%	12.2%
Trade, Transportation and Utilities	-1.9%	-1.2%	13.3%	14.7%
Information	-8.3%	-18.8%	8.2%	32.9%
Financial Services	17.5%	6.1%	14.3%	7.6%
Professional and Business Services	-10.4%	35.4%	34.0%	-1.1%
Education and Health Services	1.4%	2.1%	18.9%	16.4%
Leisure and Hospitality	8.4%	-2.3%	9.3%	12.0%
Other Services	6.1%	-3.9%	13.8%	18.4%
Federal Government		-7.0%	14.0%	23.4%
State Government		-2.0%	9.3%	11.6%
Local Government		-3.8%	14.5%	18.9%

Business Numbers

	2004	2005	2006	2007	2008
Business starts	56	54	80	66	55
Active businesses	955	970	956	934	910

Major Employers

Emerson Climate Technologies	Mfg
Honda Motor Co Ltd	Mfg
Nippon Konpo Unyu/NK Parts Inds	Trade
Plastipak Packaging Inc	Mfg
Shelby County Government	Govt
Sidney City Schools	Govt
Superior Metal Products/Am Trim	Mfg
Thor Industries/Airstream	Mfg
Wal-Mart Stores Inc	Trade
Wilson Memorial Hospital	Serv

Residential

Construction

	2005	2006	2007	2008	2009
Total units	295	222	228	144	82
Total valuation (000)	\$40,409	\$33,769	\$33,017	\$27,273	\$13,019
Total single-unit bldgs	215	190	159	121	82
Average cost per unit	\$162,600	\$164,752	\$181,754	\$211,085	\$158,766
Total multi-unit bldg units	80	32	69	23	0
Average cost per unit	\$68,125	\$77,056	\$59,685	\$75,272	\$0