

Ohio County Profiles

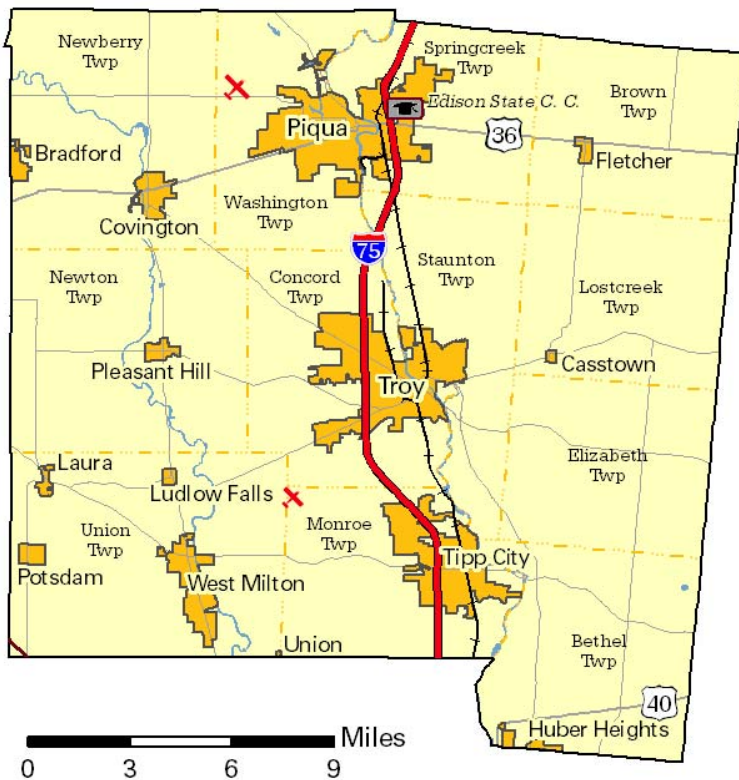


Department of
Development

Prepared by the Office of Policy, Research and Strategic Planning

Miami County

Established: Act - March 1, 1807
2009 Population: 101,256
Land Area: 407.0 square miles
County Seat: Troy City
Named for: Miami Native American Tribe



Taxes

Taxable value of real property	\$2,076,520,560
Residential	\$1,604,527,510
Agriculture	\$99,903,820
Industrial	\$111,061,120
Commercial	\$261,028,110
Mineral	\$0
Ohio income tax liability	\$75,232,022
Average per return	\$1,547.41

Land Use/Land Cover

	Percent
Urban (Residential/Commercial/Industrial/Transportation and Urban Grasses)	13.14%
Cropland	63.72%
Pasture	3.39%
Forest	18.55%
Open Water	0.52%
Wetlands (Wooded/Herbaceous)	0.61%
Bare/Mines	0.07%

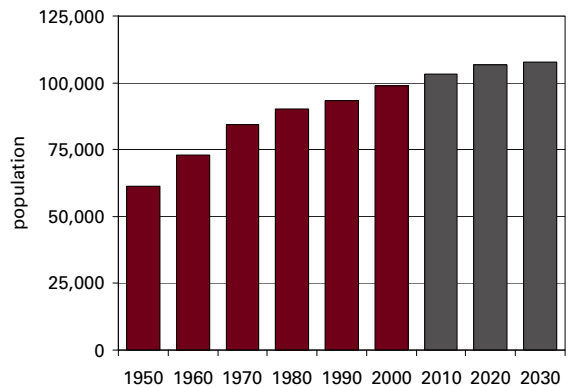
Largest Areas

	Census 2000	Est. 2009
Troy city	22,077	22,013
Piqua city	20,799	20,553
Tipp City city	9,245	9,260
Monroe twp UB	6,105	6,261
Concord twp UB	5,206	5,393
Bethel twp UB	4,898	5,124
Union twp UB	4,618	4,926
West Milton village	4,679	4,620
Newberry twp UB	2,805	3,104
Covington village	2,651	2,631

UB: Unincorporated Balance

Total Population

Census	Estimated	
1800	2001	
1810	3,941	2002
1820	8,851	2003
1830	12,807	2004
1840	19,688	2005
1850	24,999	2006
1860	29,959	2007
1870	32,740	2008
1880	36,158	2009
1890	39,754	2010
1900	43,105	2020
1910	45,047	2030
1920	48,428	
1930	51,301	
1940	52,632	
1950	61,309	
1960	72,901	
1970	84,342	
1980	90,381	
1990	93,182	
2000	98,868	
		2001
		2002
		2003
		2004
		2005
		2006
		2007
		2008
		2009
		2010
		2020
		2030



Population by Race

	Number	Percent
Total Population	98,868	100.0%
White	94,676	95.8%
African-American	1,818	1.8%
Native American	135	0.1%
Asian	845	0.9%
Pacific Islander	11	0.0%
Other	286	0.3%
Two or More Races	1,097	1.1%
Hispanic (may be of any race)	640	0.6%
Total Minority	4,504	4.6%

Educational Attainment

	Number	Percent
Persons 25 years and over	65,765	100.0%
No high school diploma	11,397	17.3%
High school graduate	26,183	39.8%
Some college, no degree	13,032	19.8%
Associate degree	4,438	6.7%
Bachelor's degree	7,174	10.9%
Master's degree or higher	3,541	5.4%

Family Type by Employment Status

	Number	Percent
Total Families	28,158	100.0%
Married couple, husband and wife in labor force	13,279	47.2%
Married couple, husband in labor force, wife not	4,534	16.1%
Married couple, wife in labor force, husband not	1,587	5.6%
Married couple, husband and wife not in labor force	3,650	13.0%
Male householder, in labor force	1,015	3.6%
Male householder, not in labor force	191	0.7%
Female householder, in labor force	2,864	10.2%
Female householder, not in labor force	1,038	3.7%

Household Income in 1999

	Number	Percent
Total Households	38,525	100.0%
Less than \$10,000	2,337	6.1%
\$10,000 to \$19,999	4,600	11.9%
\$20,000 to \$29,999	5,078	13.2%
\$30,000 to \$39,999	5,152	13.4%
\$40,000 to \$49,999	4,800	12.5%
\$50,000 to \$59,999	4,012	10.4%
\$60,000 to \$74,999	4,715	12.2%
\$75,000 to \$99,999	4,171	10.8%
\$100,000 to \$149,999	2,449	6.4%
\$150,000 to \$199,999	589	1.5%
\$200,000 or more	622	1.6%
Median household income	\$44,109	

Population by Age

	Number	Percent
Total Population	98,868	100.0%
Under 6 years	7,868	8.0%
6 to 17 years	17,723	17.9%
18 to 24 years	7,512	7.6%
25 to 44 years	28,218	28.5%
45 to 64 years	24,446	24.7%
65 years and more	13,101	13.3%
Median Age	37.7	

Family Type by Presence of Own Children Under 18

	Number	Percent
Total Families	28,158	100.0%
Married-couple families with own children	9,794	34.8%
Male householder, no wife present, with own children	809	2.9%
Female householder, no husband present, with own children	2,518	8.9%
Families with no own children	15,037	53.4%

Poverty Status in 1999 of Families By Family Type by Presence Of Related Children

	Number	Percent
Total Families	28,158	100.0%
Family income above poverty level	26,729	94.9%
Family income below poverty level	1,429	5.1%
Married couple, with related children	292	20.4%
Male householder, no wife present, with related children	87	6.1%
Female householder, no husband present, with related children	779	54.5%
Families with no related children	271	19.0%

Ratio of Income in 1999 To Poverty Level

	Number	Percent
Population for whom poverty status is determined	97,256	100.0%
Below 50% of poverty level	2,832	2.9%
50% to 99% of poverty level	3,699	3.8%
100% to 149% of poverty level	6,339	6.5%
150% to 199% of poverty level	8,175	8.4%
200% of poverty level or more	76,211	78.4%

Residence in 1995

	Number	Percent
Population 5 years and over	92,444	100.0%
Same house in 1995	52,097	56.4%
Different house, same county	24,326	26.3%
Different county, same state	10,591	11.5%
Different state	4,952	5.4%
Puerto Rico or U.S. islands	20	0.0%
Foreign country	458	0.5%

Travel Time To Work

	Number	Percent
Workers 16 years and over	49,799	100.0%
Less than 15 minutes	18,791	37.7%
15 to 29 minutes	18,680	37.5%
30 to 44 minutes	7,546	15.2%
45 to 59 minutes	1,843	3.7%
60 minutes or more	1,583	3.2%
Worked at home	1,356	2.7%

Mean travel time 20.1 minutes

Housing Units

	Number	Percent
Total housing units	40,554	100.0%
Occupied housing units	38,437	94.8%
Owner occupied	27,800	68.6%
Renter occupied	10,637	26.2%
Vacant housing units	2,117	5.2%

Year Structure Built

	Number	Percent
Total housing units	40,554	100.0%
Built 1995 to March 2000	3,477	8.6%
Built 1990 to 1994	2,377	5.9%
Built 1980 to 1989	2,593	6.4%
Built 1970 to 1979	6,726	16.6%
Built 1960 to 1969	5,809	14.3%
Built 1950 to 1959	5,516	13.6%
Built 1940 to 1949	2,944	7.3%
Built 1939 or earlier	11,112	27.4%

Median year built 1961

Value for Specified Owner-Occupied Housing Units

	Number	Percent
Specified owner-occupied housing units	24,241	100.0%
Less than \$20,000	59	0.2%
\$20,000 to \$39,999	280	1.2%
\$40,000 to \$59,999	1,125	4.6%
\$60,000 to \$79,999	3,543	14.6%
\$80,000 to \$99,999	5,601	23.1%
\$100,000 to \$124,999	3,928	16.2%
\$125,000 to \$149,999	3,520	14.5%
\$150,000 to \$199,999	3,819	15.8%
\$200,000 to \$249,999	1,253	5.2%
\$250,000 to \$499,999	1,064	4.4%
\$500,000 to \$999,999	38	0.2%
\$1,000,000 or more	11	0.0%

Median value \$109,600

House Heating Fuel

	Number	Percent
Occupied housing units	38,437	100.0%
Utility gas	21,984	57.2%
Bottled, tank or LP gas	3,654	9.5%
Electricity	9,366	24.4%
Fuel oil, kerosene, etc	2,827	7.4%
Coal, coke or wood	386	1.0%
Solar energy or other fuel	161	0.4%
No fuel used	59	0.2%

Gross Rent

	Number	Percent
Specified renter-occupied housing units	10,174	100.0%
Less than \$100	40	0.4%
\$100 to \$199	370	3.6%
\$200 to \$299	609	6.0%
\$300 to \$399	1,027	10.1%
\$400 to \$499	2,239	22.0%
\$500 to \$599	2,162	21.3%
\$600 to \$699	1,419	13.9%
\$700 to \$799	977	9.6%
\$800 to \$899	446	4.4%
\$900 to \$999	192	1.9%
\$1,000 to \$1,499	150	1.5%
\$1,500 or more	43	0.4%
No cash rent	500	4.9%

Median gross rent \$522

Median gross rent as a percentage of household income in 1999 23.0

Selected Monthly Owner Costs for Specified Owner-Occupied Housing Units

	Number	Percent
Specified owner-occupied housing units with a mortgage	17,055	100.0%
Less than \$400	584	3.4%
\$400 to \$599	1,718	10.1%
\$600 to \$799	3,725	21.8%
\$800 to \$999	3,823	22.4%
\$1,000 to \$1,249	3,038	17.8%
\$1,250 to \$1,499	1,767	10.4%
\$1,500 to \$1,999	1,644	9.6%
\$2,000 to \$2,999	673	3.9%
\$3,000 or more	83	0.5%

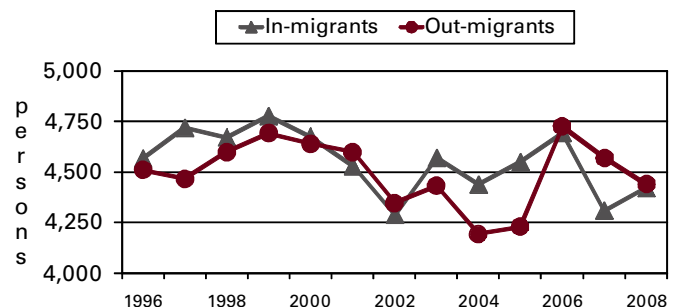
Median monthly owners cost \$924

Median monthly owners cost as a percentage of household income 20.2

Vital Statistics

	Number	Rate
Births / rate per 1,000 women aged 15 to 44	1,269	66.3
Teen births / rate per 1,000 females 15-19	143	46.8
Deaths / rate per 100,000 population	922	912.5
Marriages / rate per 1,000 population	684	6.7
Divorces / rate per 1,000 population	420	4.1

Migration



Agriculture

Land in farms (acres)	183,000
Number of farms	1,040
Average size (acres)	176
Total cash receipts	\$67,911,000
Per farm	\$64,677

Education

Public schools	41
Students (Average Daily Membership)	17,509
Expenditures per student	\$8,724
Student-teacher ratio	18.7
Graduation rate	91.3
Teachers (Full Time Equivalent)	965.7
Non-public schools	7
Students	1,201
4-year public universities	0
Branches	0
2-year public colleges	1
Private universities and colleges	0
Public libraries (Main / Branches)	6 / 2

Transportation

Registered motor vehicles	123,622
Passenger cars	77,044
Noncommercial trucks	20,265
Total license revenue	\$3,187,424.82
Interstate highway miles	19.96
Turnpike miles	0.00
U.S. highway miles	28.31
State highway miles	153.57
County, township, and municipal road miles	1,002.49
Commercial airports	2

Voting

Number of precincts	81
Number of registered voters	71,373
Voted in 2006 election	53,355
Percent turnout	74.7%

Health Care

Physicians (MDs & DOs)	131
Registered hospitals	1
Number of beds	195
Licensed nursing homes	6
Number of beds	758
Licensed residential care	4
Number of beds	249
Adults with employer-based insurance	63.5%
Children with employer-based insurance	59.8%

State Parks, Forests, Nature Preserves, And Wildlife Areas

Facilities	4
Acreage	148.10

Communications

Television stations	0
Radio stations	1
Daily newspapers	2
Circulation	18,000

Crime

Total crimes reported in Uniform Crime Report	1,993
---	-------

Finance

FDIC insured financial institutions (HQs)	3
Assets (000)	\$365,457
Branch offices	36
Institutions represented	11

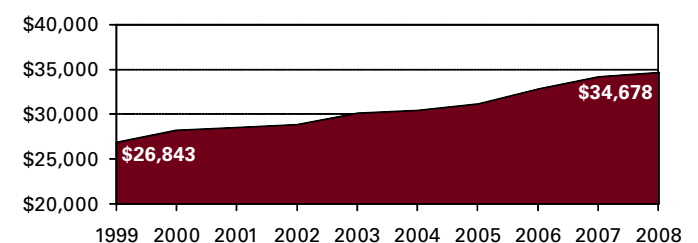
Transfer Payments

Total transfer payments	\$603,625,000
Payments to individuals	\$586,547,000
Retirement and disability	\$268,714,000
Medical payments	\$227,075,000
Income maintenance (Supplemental SSI, family assistance, food stamps, etc)	\$38,666,000
Unemployment benefits	\$13,327,000
Veterans benefits	\$11,570,000
Federal education and training assistance	\$18,385,000
Other payments to individuals	\$8,810,000
Total personal income	\$3,506,947,000
Dependency ratio	17.2%

Federal Expenditures

Direct expenditures or obligations	\$588,613,587
Retirement and disability	\$298,837,829
Other direct payments	\$147,520,308
Grant awards	\$71,706,070
Highway planning and construction	\$7,185,522
Temporary assistance to needy families	\$6,339,460
Medical assistance program	\$41,818,106
Procurement contract awards	\$53,678,893
Dept. of Defense	\$48,578,229
Salary and wages	\$16,870,487
Dept. of Defense	\$1,018,000
Other federal assistance	\$206,127,441
Direct loans	\$195,000
Guaranteed loans	\$96,723,930
Insurance	\$109,208,511

Per Capita Personal Income



Civilian Labor Force

	2005	2006	2007	2008	2009
Civilian labor force	54,700	55,600	55,100	54,700	55,400
Employed	51,600	52,600	52,200	51,200	48,900
Unemployed	3,000	3,000	3,000	3,500	6,500
Unemployment rate	5.6	5.3	5.4	6.4	11.7

Establishments, Employment, and Wages by Sector: 2008

Industrial Sector	Number of Establishments	Average Employment	Total Wages	Average Weekly Wage
Private Sector	2,185	35,345	\$1,208,547,698	\$658
Goods-Producing	520	11,860	\$542,250,914	\$879
Natural Resources and Mining	16	205	\$4,683,722	\$440
Constuction	254	1,725	\$67,371,048	\$751
Manufacturing	250	9,930	\$470,196,144	\$911
Service-Providing	1,665	23,485	\$666,296,784	\$546
Trade, Transportation and Utilities	528	8,644	\$266,133,745	\$592
Information	30	291	\$8,765,383	\$579
Financial Services	228	1,229	\$48,347,121	\$757
Professional and Business Services	290	3,733	\$116,148,704	\$598
Education and Health Services	197	4,550	\$158,393,928	\$669
Leisure and Hospitality	203	3,851	\$46,112,547	\$230
Other Services	188	1,183	\$22,187,821	\$361
Federal Government		209	\$10,468,715	\$962
State Government		157	\$8,035,232	\$985
Local Government		4,847	\$182,784,668	\$725

Private Sector total includes Unclassified establishments not shown.

Change Since 2003

Private Sector	1.1%	-3.0%	9.9%	13.3%
Goods-Producing	-6.5%	-10.3%	5.4%	17.5%
Natural Resources and Mining	-5.9%	5.7%	1.4%	-3.7%
Construction	-8.3%	-6.0%	14.7%	21.9%
Manufacturing	-4.6%	-11.3%	4.2%	17.5%
Service-Producing	3.7%	1.2%	13.8%	12.6%
Trade, Transportation and Utilities	3.1%	3.0%	17.5%	14.1%
Information	20.0%	-34.0%	-25.6%	12.6%
Financial Services	15.7%	-3.3%	18.9%	23.1%
Professional and Business Services	2.5%	-0.9%	0.6%	1.5%
Education and Health Services	7.1%	-0.3%	21.3%	21.6%
Leisure and Hospitality	5.2%	11.4%	21.7%	9.0%
Other Services	-10.5%	-8.6%	-1.1%	8.4%
Federal Government		-7.9%	10.0%	19.2%
State Government		23.6%	37.5%	11.4%
Local Government		2.7%	17.3%	14.2%

Business Numbers

	2004	2005	2006	2007	2008
Business starts	208	231	231	196	189
Active businesses	2,001	2,063	2,060	1,945	1,928

Major Employers

AO Smith Corp	Mfg
ConAgra Inc	Mfg
Crane Co	Mfg
F-Tech Inc/F&P America	Mfg
Goodrich Corp	Mfg
Illinois Tool Works Inc/Hobart	Mfg
Jackson Tube Service	Mfg
Meijer Inc	Trade
Piqua City Schools	Govt
Troy City Schools	Govt
Upper Valley Medical Center	Serv

Residential

Construction

	2005	2006	2007	2008	2009
Total units	307	277	168	157	114
Total valuation (000)	\$53,952	\$54,783	\$35,493	\$34,224	\$21,370
Total single-unit bldgs	307	277	168	157	114
Average cost per unit	\$175,739	\$197,771	\$211,268	\$217,987	\$187,458
Total multi-unit bldg units	0	0	0	0	0
Average cost per unit	\$0	\$0	\$0	\$0	\$0