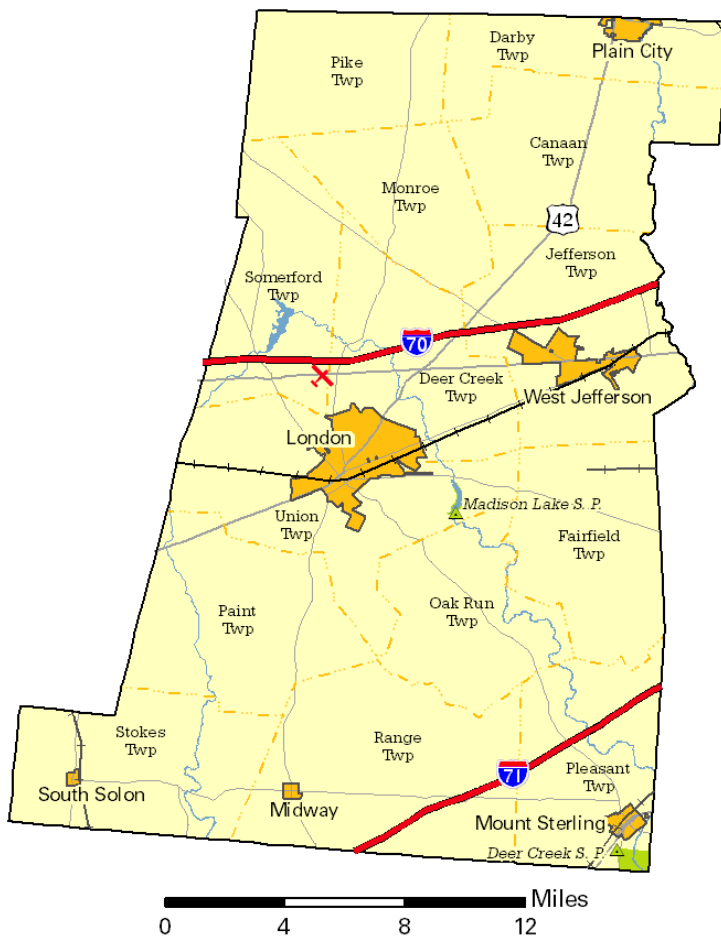


Ohio County Profiles

Prepared by the Office of Policy, Research and Strategic Planning

Madison County

Established: Act - March 1, 1810
2009 Population: 42,539
Land Area: 465.2 square miles
County Seat: London City
Named for: James Madison, Fourth U.S. President



Taxes

Taxable value of real property	\$816,654,070
Residential	\$560,609,790
Agriculture	\$130,839,640
Industrial	\$35,924,300
Commercial	\$89,280,340
Mineral	\$0
Ohio income tax liability	\$26,121,722
Average per return	\$1,439.05

Land Use/Land Cover

	Percent
Urban (Residential/Commercial/Industrial/Transportation and Urban Grasses)	5.65%
Cropland	81.12%
Pasture	6.78%
Forest	5.20%
Open Water	0.51%
Wetlands (Wooded/Herbaceous)	0.74%
Bare/Mines	0.00%

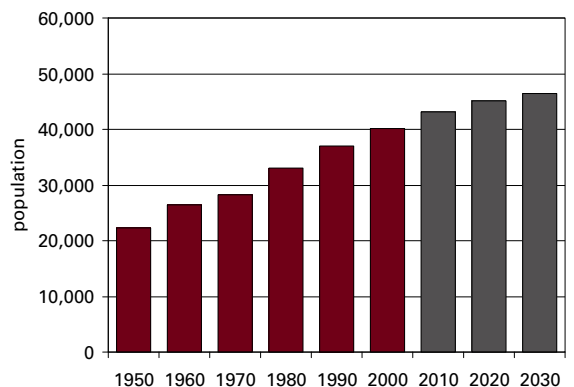
Largest Areas

	Census 2000	Est. 2009
London city	8,781	9,627
Union twp	5,421	6,239
West Jefferson village	4,347	4,272
Somerford twp	2,939	3,024
Jefferson twp UB	2,597	2,628
Canaan twp	2,496	2,462
Plain City village (pt.)	1,942	2,390
Monroe twp	1,769	1,868
Mount Sterling village	1,999	1,835
Fairfield twp	1,333	1,365

UB: Unincorporated Balance

Total Population

Census	Estimated
1800	20,590
1810	19,902
1820	19,662
1830	20,253
1840	21,811
1850	22,300
1860	26,454
1870	28,318
1880	33,004
1890	37,068
2000	40,213
2001	40,175
2002	40,353
2003	40,578
2004	40,714
2005	40,781
2006	41,269
2007	41,702
2008	41,856
2009	42,539
2010	43,130
2020	45,190
2030	46,520



Population by Race	Number	Percent
Total Population	40,213	100.0%
White	36,796	91.5%
African-American	2,412	6.0%
Native American	94	0.2%
Asian	196	0.5%
Pacific Islander	19	0.0%
Other	76	0.2%
Two or More Races	620	1.5%
Hispanic (may be of any race)	294	0.7%
Total Minority	3,507	8.7%

Educational Attainment	Number	Percent
Persons 25 years and over	26,615	100.0%
No high school diploma	5,582	21.0%
High school graduate	11,097	41.7%
Some college, no degree	5,017	18.9%
Associate degree	1,446	5.4%
Bachelor's degree	2,474	9.3%
Master's degree or higher	999	3.8%

Family Type by Employment Status	Number	Percent
Total Families	10,078	100.0%
Married couple, husband and wife in labor force	4,804	47.7%
Married couple, husband in labor force, wife not	1,746	17.3%
Married couple, wife in labor force, husband not	597	5.9%
Married couple, husband and wife not in labor force	1,112	11.0%
Male householder, in labor force	439	4.4%
Male householder, not in labor force	107	1.1%
Female householder, in labor force	873	8.7%
Female householder, not in labor force	400	4.0%

Household Income in 1999	Number	Percent
Total Households	13,690	100.0%
Less than \$10,000	990	7.2%
\$10,000 to \$19,999	1,502	11.0%
\$20,000 to \$29,999	1,690	12.3%
\$30,000 to \$39,999	1,878	13.7%
\$40,000 to \$49,999	1,775	13.0%
\$50,000 to \$59,999	1,440	10.5%
\$60,000 to \$74,999	1,709	12.5%
\$75,000 to \$99,999	1,572	11.5%
\$100,000 to \$149,999	798	5.8%
\$150,000 to \$199,999	193	1.4%
\$200,000 or more	143	1.0%
Median household income	\$44,212	

Population by Age	Number	Percent
Total Population	40,213	100.0%
Under 6 years	3,066	7.6%
6 to 17 years	6,863	17.1%
18 to 24 years	3,669	9.1%
25 to 44 years	13,146	32.7%
45 to 64 years	9,079	22.6%
65 years and more	4,390	10.9%
Median Age	35.8	

Family Type by Presence of Own Children Under 18	Number	Percent
Total Families	10,078	100.0%
Married-couple families with own children	3,785	37.6%
Male householder, no wife present, with own children	343	3.4%
Female householder, no husband present, with own children	814	8.1%
Families with no own children	5,136	51.0%

Poverty Status in 1999 of Families By Family Type by Presence Of Related Children	Number	Percent
Total Families	10,078	100.0%
Family income above poverty level	9,455	93.8%
Family income below poverty level	623	6.2%
Married couple, with related children	184	29.5%
Male householder, no wife present, with related children	57	9.1%
Female householder, no husband present, with related children	279	44.8%
Families with no related children	103	16.5%

Ratio of Income in 1999 To Poverty Level	Number	Percent
Population for whom poverty status is determined	35,612	100.0%
Below 50% of poverty level	914	2.6%
50% to 99% of poverty level	1,876	5.3%
100% to 149% of poverty level	2,566	7.2%
150% to 199% of poverty level	2,799	7.9%
200% of poverty level or more	27,457	77.1%

Residence in 1995	Number	Percent
Population 5 years and over	37,674	100.0%
Same house in 1995	21,180	56.2%
Different house, same county	7,281	19.3%
Different county, same state	7,548	20.0%
Different state	1,293	3.4%
Puerto Rico or U.S. islands	0	0.0%
Foreign country	372	1.0%

Travel Time To Work

	Number	Percent
Workers 16 years and over	17,828	100.0%
Less than 15 minutes	5,010	28.1%
15 to 29 minutes	5,393	30.3%
30 to 44 minutes	4,386	24.6%
45 to 59 minutes	1,656	9.3%
60 minutes or more	792	4.4%
Worked at home	591	3.3%
Mean travel time	25.8 minutes	

Housing Units

	Number	Percent
Total housing units	14,399	100.0%
Occupied housing units	13,672	95.0%
Owner occupied	9,884	68.6%
Renter occupied	3,788	26.3%
Vacant housing units	727	5.0%

Year Structure Built

	Number	Percent
Total housing units	14,399	100.0%
Built 1995 to March 2000	1,373	9.5%
Built 1990 to 1994	1,121	7.8%
Built 1980 to 1989	1,778	12.3%
Built 1970 to 1979	2,681	18.6%
Built 1960 to 1969	1,679	11.7%
Built 1950 to 1959	1,599	11.1%
Built 1940 to 1949	763	5.3%
Built 1939 or earlier	3,405	23.6%
Median year built	1969	

Value for Specified Owner-Occupied Housing Units

	Number	Percent
Specified owner-occupied housing units	7,780	100.0%
Less than \$20,000	16	0.2%
\$20,000 to \$39,999	204	2.6%
\$40,000 to \$59,999	369	4.7%
\$60,000 to \$79,999	1,190	15.3%
\$80,000 to \$99,999	1,916	24.6%
\$100,000 to \$124,999	1,139	14.6%
\$125,000 to \$149,999	1,002	12.9%
\$150,000 to \$199,999	1,157	14.9%
\$200,000 to \$249,999	393	5.1%
\$250,000 to \$499,999	362	4.7%
\$500,000 to \$999,999	32	0.4%
\$1,000,000 or more	0	0.0%
Median value	\$104,300	

House Heating Fuel

	Number	Percent
Occupied housing units	13,672	100.0%
Utility gas	6,890	50.4%
Bottled, tank or LP gas	2,189	16.0%
Electricity	3,048	22.3%
Fuel oil, kerosene, etc	1,322	9.7%
Coal, coke or wood	106	0.8%
Solar energy or other fuel	99	0.7%
No fuel used	18	0.1%

Gross Rent

	Number	Percent
Specified renter-occupied housing units	3,504	100.0%
Less than \$100	34	1.0%
\$100 to \$199	226	6.4%
\$200 to \$299	284	8.1%
\$300 to \$399	341	9.7%
\$400 to \$499	679	19.4%
\$500 to \$599	651	18.6%
\$600 to \$699	454	13.0%
\$700 to \$799	241	6.9%
\$800 to \$899	145	4.1%
\$900 to \$999	32	0.9%
\$1,000 to \$1,499	143	4.1%
\$1,500 or more	20	0.6%
No cash rent	254	7.2%
Median gross rent	\$510	
Median gross rent as a percentage of household income in 1999	22.3	

Selected Monthly Owner Costs for Specified Owner-Occupied Housing Units

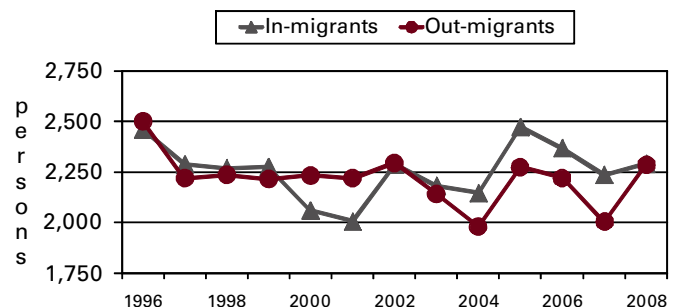
	Number	Percent
Specified owner-occupied housing units with a mortgage	5,637	100.0%
Less than \$400	71	1.3%
\$400 to \$599	602	10.7%
\$600 to \$799	1,026	18.2%
\$800 to \$999	1,298	23.0%
\$1,000 to \$1,249	1,138	20.2%
\$1,250 to \$1,499	704	12.5%
\$1,500 to \$1,999	576	10.2%
\$2,000 to \$2,999	156	2.8%
\$3,000 or more	66	1.2%
Median monthly owners cost	\$975	

Median monthly owners cost as a percentage of household income 21.4

Vital Statistics

	Number	Rate
Births / rate per 1,000 women aged 15 to 44	493	66.9
Teen births / rate per 1,000 females 15-19	55	43.9
Deaths / rate per 100,000 population	376	906.0
Marriages / rate per 1,000 population	231	5.6
Divorces / rate per 1,000 population	129	3.1

Migration



Agriculture

Land in farms (acres)	241,000
Number of farms	710
Average size (acres)	339
Total cash receipts	\$100,178,000
Per farm	\$139,136

Education

Public schools	18
Students (Average Daily Membership)	7,708
Expenditures per student	\$8,603
Student-teacher ratio	19.7
Graduation rate	91.5
Teachers (Full Time Equivalent)	426.0
Non-public schools	2
Students	181
4-year public universities	0
Branches	0
2-year public colleges	0
Private universities and colleges	0
Public libraries (Main / Branches)	4 / 0

Transportation

Registered motor vehicles	45,242
Passenger cars	26,948
Noncommercial trucks	7,886
Total license revenue	\$1,271,389.51
Interstate highway miles	27.26
Turnpike miles	0.00
U.S. highway miles	45.24
State highway miles	123.76
County, township, and municipal road miles	542.09
Commercial airports	1

Voting

Number of precincts	43
Number of registered voters	24,254
Voted in 2006 election	17,723
Percent turnout	73.1%

Health Care

Physicians (MDs & DOs)	46
Registered hospitals	1
Number of beds	105
Licensed nursing homes	3
Number of beds	197
Licensed residential care	2
Number of beds	184
Adults with employer-based insurance	62.6%
Children with employer-based insurance	70.4%

State Parks, Forests, Nature Preserves, And Wildlife Areas

Facilities	6
Acreage	632.69

Communications

Television stations	0
Radio stations	0
Daily newspapers	1
Circulation	5,500

Crime

Total crimes reported in Uniform Crime Report	561
---	-----

Finance

FDIC insured financial institutions (HQs)	0
Assets (000)	\$0
Branch offices	14
Institutions represented	11

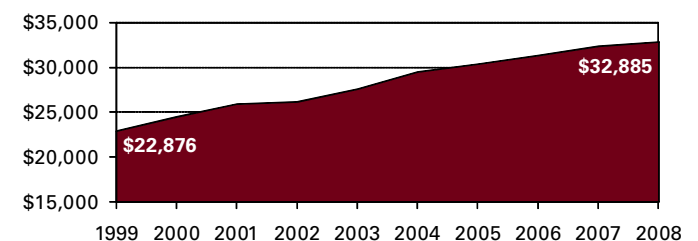
Transfer Payments

Total transfer payments	\$237,095,000
Payments to individuals	\$230,023,000
Retirement and disability	\$89,827,000
Medical payments	\$103,216,000
Income maintenance (Supplemental SSI, family assistance, food stamps, etc)	\$19,122,000
Unemployment benefits	\$3,902,000
Veterans benefits	\$4,296,000
Federal education and training assistance	\$6,263,000
Other payments to individuals	\$3,397,000
Total personal income	\$1,376,438,000
Dependency ratio	17.2%

Federal Expenditures

Direct expenditures or obligations	\$235,383,835
Retirement and disability	\$104,222,058
Other direct payments	\$67,154,493
Grant awards	\$51,133,735
Highway planning and construction	\$13,543,667
Temporary assistance to needy families	\$2,578,476
Medical assistance program	\$27,520,737
Procurement contract awards	\$5,734,397
Dept. of Defense	\$4,096,959
Salary and wages	\$7,139,152
Dept. of Defense	\$0
Other federal assistance	\$129,048,515
Direct loans	\$1,165,905
Guaranteed loans	\$36,723,391
Insurance	\$91,159,219

Per Capita Personal Income



Civilian Labor Force

	2005	2006	2007	2008	2009
Civilian labor force	19,800	20,000	20,000	20,200	20,400
Employed	18,600	19,000	19,000	19,000	18,500
Unemployed	1,100	1,000	1,000	1,300	1,900
Unemployment rate	5.7	5.2	5.2	6.2	9.3

Establishments, Employment, and Wages by Sector: 2008

Industrial Sector	Number of Establishments	Average Employment	Total Wages	Average Weekly Wage
Private Sector	734	10,704	\$346,851,831	\$623
Goods-Producing	170	3,558	\$147,402,120	\$797
Natural Resources and Mining	15	137	\$3,748,074	\$528
Constuction	104	428	\$15,365,981	\$691
Manufacturing	50	2,994	\$128,288,065	\$824
Service-Providing	565	7,146	\$199,449,711	\$537
Trade, Transportation and Utilities	200	3,193	\$97,066,084	\$585
Information	9	53	\$2,164,167	\$791
Financial Services	70	271	\$7,977,997	\$567
Professional and Business Services	96	1,283	\$44,463,887	\$666
Education and Health Services	76	1,225	\$33,950,312	\$533
Leisure and Hospitality	66	973	\$11,225,921	\$222
Other Services	47	148	\$2,588,395	\$336
Federal Government		87	\$4,020,204	\$894
State Government		1,351	\$65,298,193	\$930
Local Government		1,782	\$64,982,450	\$701

Private Sector total includes Unclassified establishments not shown.

Change Since 2003

Private Sector	-2.1%	2.1%	9.5%	7.2%
Goods-Producing	-2.9%	-6.8%	2.2%	9.6%
Natural Resources and Mining	0.0%	24.5%	58.7%	27.2%
Construction	-1.9%	-15.1%	-1.4%	16.3%
Manufacturing	-7.4%	-6.6%	1.5%	8.7%
Service-Producing	-1.7%	7.2%	15.7%	8.0%
Trade, Transportation and Utilities	-2.4%	39.9%	68.3%	20.4%
Information	12.5%	-11.7%	21.9%	37.8%
Financial Services	-6.7%	-5.9%	2.2%	8.6%
Professional and Business Services	-3.0%	26.3%	57.9%	25.0%
Education and Health Services	10.1%	-33.4%	-46.3%	-19.5%
Leisure and Hospitality	8.2%	-1.5%	8.0%	9.9%
Other Services	-17.5%	-22.5%	-20.3%	2.4%
Federal Government		1.2%	20.7%	19.5%
State Government		1.9%	8.6%	6.7%
Local Government		11.7%	29.1%	15.5%

Business Numbers

	2004	2005	2006	2007	2008
Business starts	114	117	147	122	98
Active businesses	1,091	1,138	1,180	1,108	1,084

Residential

Construction

	2005	2006	2007	2008	2009
Total units	163	124	81	44	36
Total valuation (000)	\$21,846	\$17,810	\$13,811	\$6,837	\$5,465
Total single-unit bldgs	147	120	81	44	34
Average cost per unit	\$134,754	\$145,899	\$170,503	\$155,379	\$156,940
Total multi-unit bldg units	16	4	0	0	2
Average cost per unit	\$127,313	\$75,487	\$0	\$0	\$64,596

Major Employers

Battelle Memorial Institute	R&D
Invensys plc	Mfg
Kikuchi Metal et al/Jefferson Industries	Mfg
London City Schools	Govt
Madison County Hospital	Serv
Nissen Chemitec/London Industries	Mfg
Showa Demko KK/Showa Aluminum Cor	Mfg
Stanley Electric U S Co Inc	Mfg
Staples Inc	Trade
State of Ohio	Govt
Target Corp	Trade