

Ohio County Profiles

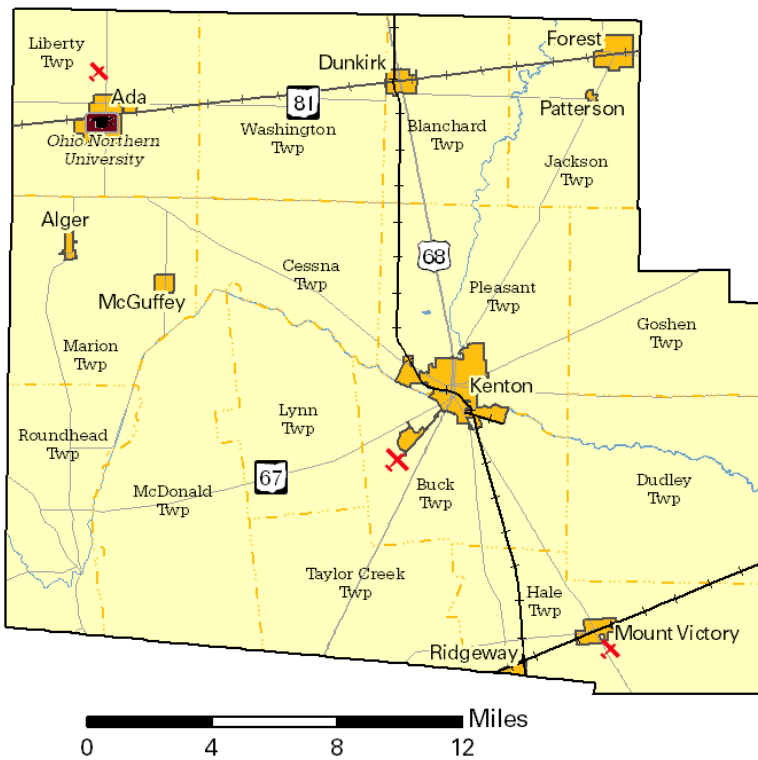


Department of
Development

Prepared by the Office of Policy, Research and Strategic Planning

Hardin County

Established: Act - April 1, 1820
2009 Population: 31,818
Land Area: 470.3 square miles
County Seat: Kenton City
Named for: Colonel John Hardin Revolutionary War



Taxes

Taxable value of real property	\$435,384,060
Residential	\$272,984,590
Agriculture	\$104,877,590
Industrial	\$18,850,000
Commercial	\$38,671,880
Mineral	\$0
Ohio income tax liability	\$13,039,048
Average per return	\$993.83

Land Use/Land Cover

	Percent
Urban (Residential/Commercial/Industrial/Transportation and Urban Grasses)	4.32%
Cropland	80.00%
Pasture	6.92%
Forest	6.89%
Open Water	0.26%
Wetlands (Wooded/Herbaceous)	1.59%
Bare/Mines	0.02%

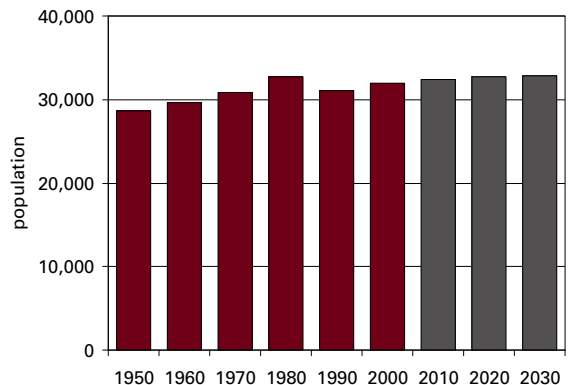
Largest Areas

	Census 2000	Est. 2009
Kenton city	8,363	8,021
Ada village	5,577	6,065
Pleasant twp UB	1,635	1,654
Liberty twp UB	1,572	1,501
Forest village (pt.)	1,505	1,450
Dudley twp	1,257	1,216
Buck twp UB	1,051	1,103
Marion twp UB	1,039	988
Dunkirk village	952	936
McDonald twp	914	886

UB: Unincorporated Balance

Total Population

Census	Estimated
1800	2001 31,690
1810	2002 31,693
1820 22	2003 31,541
1830 210	2004 31,890
1840 4,598	2005 31,697
1850 8,251	2006 31,604
1860 13,570	2007 31,770
1870 18,714	2008 31,804
1880 27,023	2009 31,818
1890 28,939	Projected
1900 31,111	2010 32,450
1950 28,673	2020 32,720
1960 29,633	2030 32,830
1970 30,813	
1980 32,719	
1990 31,945	



Population by Race	Number	Percent
Total Population	31,945	100.0%
White	31,164	97.6%
African-American	229	0.7%
Native American	102	0.3%
Asian	126	0.4%
Pacific Islander	0	0.0%
Other	55	0.2%
Two or More Races	269	0.8%
Hispanic (may be of any race)	378	1.2%
Total Minority	1,026	3.2%

Educational Attainment	Number	Percent
Persons 25 years and over	19,220	100.0%
No high school diploma	3,738	19.4%
High school graduate	9,690	50.4%
Some college, no degree	2,657	13.8%
Associate degree	943	4.9%
Bachelor's degree	1,345	7.0%
Master's degree or higher	847	4.4%

Family Type by Employment Status	Number	Percent
Total Families	8,227	100.0%
Married couple, husband and wife in labor force	3,395	41.3%
Married couple, husband in labor force, wife not	1,489	18.1%
Married couple, wife in labor force, husband not	451	5.5%
Married couple, husband and wife not in labor force	1,299	15.8%
Male householder, in labor force	313	3.8%
Male householder, not in labor force	68	0.8%
Female householder, in labor force	813	9.9%
Female householder, not in labor force	399	4.8%

Household Income in 1999	Number	Percent
Total Households	11,995	100.0%
Less than \$10,000	1,519	12.7%
\$10,000 to \$19,999	1,780	14.8%
\$20,000 to \$29,999	1,842	15.4%
\$30,000 to \$39,999	1,720	14.3%
\$40,000 to \$49,999	1,381	11.5%
\$50,000 to \$59,999	1,206	10.1%
\$60,000 to \$74,999	1,226	10.2%
\$75,000 to \$99,999	789	6.6%
\$100,000 to \$149,999	390	3.3%
\$150,000 to \$199,999	30	0.3%
\$200,000 or more	112	0.9%
Median household income	\$34,440	

Population by Age	Number	Percent
Total Population	31,945	100.0%
Under 6 years	2,574	8.1%
6 to 17 years	5,186	16.2%
18 to 24 years	4,965	15.5%
25 to 44 years	8,311	26.0%
45 to 64 years	6,770	21.2%
65 years and more	4,139	13.0%
Median Age	33.3	

Family Type by Presence of Own Children Under 18	Number	Percent
Total Families	8,227	100.0%
Married-couple families with own children	2,890	35.1%
Male householder, no wife present, with own children	236	2.9%
Female householder, no husband present, with own children	706	8.6%
Families with no own children	4,395	53.4%

Poverty Status in 1999 of Families By Family Type by Presence Of Related Children	Number	Percent
Total Families	8,227	100.0%
Family income above poverty level	7,497	91.1%
Family income below poverty level	730	8.9%
Married couple, with related children	232	31.8%
Male householder, no wife present, with related children	48	6.6%
Female householder, no husband present, with related children	267	36.6%
Families with no related children	183	25.1%

Ratio of Income in 1999 To Poverty Level	Number	Percent
Population for whom poverty status is determined	29,825	100.0%
Below 50% of poverty level	1,895	6.4%
50% to 99% of poverty level	2,033	6.8%
100% to 149% of poverty level	2,621	8.8%
150% to 199% of poverty level	2,954	9.9%
200% of poverty level or more	20,322	68.1%

Residence in 1995	Number	Percent
Population 5 years and over	29,860	100.0%
Same house in 1995	17,169	57.5%
Different house, same county	7,173	24.0%
Different county, same state	4,218	14.1%
Different state	1,169	3.9%
Puerto Rico or U.S. islands	0	0.0%
Foreign country	131	0.4%

Travel Time To Work

	Number	Percent
Workers 16 years and over	14,390	100.0%
Less than 15 minutes	5,618	39.0%
15 to 29 minutes	3,878	26.9%
30 to 44 minutes	2,780	19.3%
45 to 59 minutes	914	6.4%
60 minutes or more	578	4.0%
Worked at home	622	4.3%
Mean travel time	21.8 minutes	

Housing Units

	Number	Percent
Total housing units	12,907	100.0%
Occupied housing units	11,963	92.7%
Owner occupied	8,730	67.6%
Renter occupied	3,233	25.0%
Vacant housing units	944	7.3%

Year Structure Built

	Number	Percent
Total housing units	12,907	100.0%
Built 1995 to March 2000	1,069	8.3%
Built 1990 to 1994	735	5.7%
Built 1980 to 1989	893	6.9%
Built 1970 to 1979	1,720	13.3%
Built 1960 to 1969	1,455	11.3%
Built 1950 to 1959	1,316	10.2%
Built 1940 to 1949	1,110	8.6%
Built 1939 or earlier	4,609	35.7%
Median year built	1956	

Value for Specified Owner-Occupied Housing Units

	Number	Percent
Specified owner-occupied housing units	6,576	100.0%
Less than \$20,000	145	2.2%
\$20,000 to \$39,999	660	10.0%
\$40,000 to \$59,999	1,312	20.0%
\$60,000 to \$79,999	1,719	26.1%
\$80,000 to \$99,999	1,274	19.4%
\$100,000 to \$124,999	678	10.3%
\$125,000 to \$149,999	339	5.2%
\$150,000 to \$199,999	295	4.5%
\$200,000 to \$249,999	84	1.3%
\$250,000 to \$499,999	47	0.7%
\$500,000 to \$999,999	16	0.2%
\$1,000,000 or more	7	0.1%
Median value	\$73,800	

House Heating Fuel

	Number	Percent
Occupied housing units	11,963	100.0%
Utility gas	5,929	49.6%
Bottled, tank or LP gas	2,775	23.2%
Electricity	2,468	20.6%
Fuel oil, kerosene, etc	338	2.8%
Coal, coke or wood	402	3.4%
Solar energy or other fuel	30	0.3%
No fuel used	21	0.2%

Gross Rent

	Number	Percent
Specified renter-occupied housing units	3,091	100.0%
Less than \$100	17	0.5%
\$100 to \$199	257	8.3%
\$200 to \$299	366	11.8%
\$300 to \$399	729	23.6%
\$400 to \$499	709	22.9%
\$500 to \$599	388	12.6%
\$600 to \$699	187	6.0%
\$700 to \$799	72	2.3%
\$800 to \$899	37	1.2%
\$900 to \$999	17	0.5%
\$1,000 to \$1,499	27	0.9%
\$1,500 or more	11	0.4%
No cash rent	274	8.9%
Median gross rent	\$405	
Median gross rent as a percentage of household income in 1999	23.6	

Selected Monthly Owner Costs for Specified Owner-Occupied Housing Units

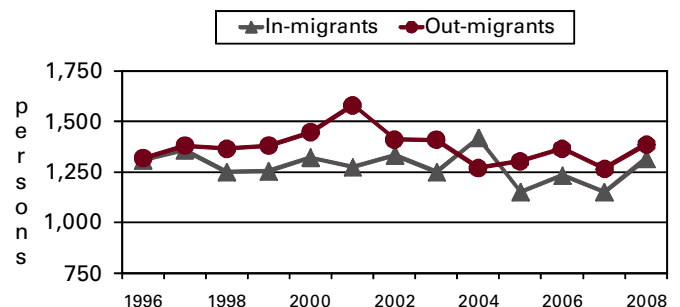
	Number	Percent
Specified owner-occupied housing units with a mortgage	4,245	100.0%
Less than \$400	298	7.0%
\$400 to \$599	1,011	23.8%
\$600 to \$799	1,158	27.3%
\$800 to \$999	917	21.6%
\$1,000 to \$1,249	597	14.1%
\$1,250 to \$1,499	140	3.3%
\$1,500 to \$1,999	116	2.7%
\$2,000 to \$2,999	8	0.2%
\$3,000 or more	0	0.0%
Median monthly owners cost	\$744	

Median monthly owners cost as a percentage of household income 19.3

Vital Statistics

	Number	Rate
Births / rate per 1,000 women aged 15 to 44	403	56.8
Teen births / rate per 1,000 females 15-19	51	34.0
Deaths / rate per 100,000 population	297	938.4
Marriages / rate per 1,000 population	209	6.5
Divorces / rate per 1,000 population	114	3.6

Migration



Agriculture

Land in farms (acres)	242,000
Number of farms	820
Average size (acres)	295
Total cash receipts	\$119,627,000
Per farm	\$144,129

Education

Public schools	21
Students (Average Daily Membership)	5,547
Expenditures per student	\$8,540
Student-teacher ratio	16.0
Graduation rate	89.7
Teachers (Full Time Equivalent)	388.6
Non-public schools	0
Students	0
4-year public universities	0
Branches	0
2-year public colleges	0
Private universities and colleges	1
Public libraries (Main / Branches)	6 / 1

Transportation

Registered motor vehicles	34,035
Passenger cars	19,833
Noncommercial trucks	6,916
Total license revenue	\$938,592.53
Interstate highway miles	0.00
Turnpike miles	0.00
U.S. highway miles	21.81
State highway miles	154.18
County, township, and municipal road miles	828.48
Commercial airports	3

Voting

Number of precincts	38
Number of registered voters	18,036
Voted in 2006 election	13,318
Percent turnout	73.8%

Health Care

Physicians (MDs & DOs)	11
Registered hospitals	1
Number of beds	25
Licensed nursing homes	3
Number of beds	268
Licensed residential care	1
Number of beds	41
Adults with employer-based insurance	59.6%
Children with employer-based insurance	65.2%

State Parks, Forests, Nature Preserves, And Wildlife Areas

Facilities	2
Acreage	1,058.93

Communications

Television stations	0
Radio stations	2
Daily newspapers	1
Circulation	7,200

Crime

Total crimes reported in Uniform Crime Report	723
---	-----

Finance

FDIC insured financial institutions (HQs)	4
Assets (000)	\$360,158
Branch offices	13
Institutions represented	8

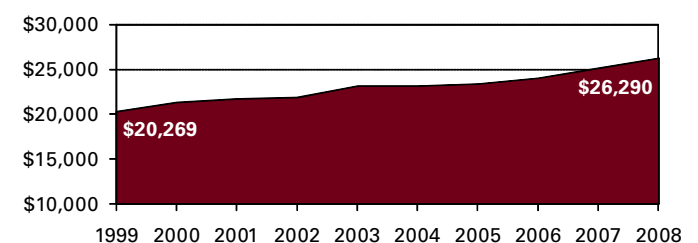
Transfer Payments

Total transfer payments	\$184,232,000
Payments to individuals	\$178,834,000
Retirement and disability	\$73,340,000
Medical payments	\$75,668,000
Income maintenance (Supplemental SSI, family assistance, food stamps, etc)	\$13,634,000
Unemployment benefits	\$3,938,000
Veterans benefits	\$2,979,000
Federal education and training assistance	\$6,584,000
Other payments to individuals	\$2,691,000
Total personal income	\$836,135,000
Dependency ratio	22.0%

Federal Expenditures

Direct expenditures or obligations	\$154,455,269
Retirement and disability	\$49,180,574
Other direct payments	\$65,160,910
Grant awards	\$25,296,088
Highway planning and construction	\$367,584
Temporary assistance to needy families	\$2,048,328
Medical assistance program	\$15,011,161
Procurement contract awards	\$8,581,041
Dept. of Defense	\$7,120,078
Salary and wages	\$6,236,656
Dept. of Defense	\$4,000
Other federal assistance	\$107,795,389
Direct loans	\$215,000
Guaranteed loans	\$20,198,417
Insurance	\$87,381,972

Per Capita Personal Income



Civilian Labor Force

	2005	2006	2007	2008	2009
Civilian labor force	16,200	15,900	15,800	15,000	15,300
Employed	15,300	15,000	14,800	14,000	13,400
Unemployed	900	900	900	1,100	1,800
Unemployment rate	5.8	5.5	5.9	7.1	12.0

Establishments, Employment, and Wages by Sector: 2008

Industrial Sector	Number of Establishments	Average Employment	Total Wages	Average Weekly Wage
Private Sector	464	6,648	\$215,636,782	\$624
Goods-Producing	84	2,368	\$97,179,687	\$789
Natural Resources and Mining	13	135	\$3,873,504	\$553
Constuction	35	130	\$3,682,213	\$547
Manufacturing	37	2,104	\$89,623,970	\$819
Service-Providing	380	4,280	\$118,457,095	\$532
Trade, Transportation and Utilities	128	1,338	\$37,862,193	\$544
Information	13	87	\$2,206,415	\$485
Financial Services	45	265	\$8,005,234	\$581
Professional and Business Services	40	187	\$4,314,348	\$444
Education and Health Services	37	1,260	\$50,957,803	\$778
Leisure and Hospitality	63	916	\$11,621,273	\$244
Other Services	55	226	\$3,480,981	\$297
Federal Government		81	\$3,319,244	\$790
State Government		37	\$1,676,695	\$871
Local Government		1,489	\$44,425,413	\$574

Private Sector total includes Unclassified establishments not shown.

Change Since 2003

Private Sector	-4.3%	-0.3%	17.0%	17.3%
Goods-Producing	-14.3%	-1.9%	11.1%	13.2%
Natural Resources and Mining	160.0%	542.9%	780.2%	35.5%
Construction	-30.0%	-29.0%	-15.0%	20.2%
Manufacturing	-11.9%	-4.8%	8.3%	13.8%
Service-Producing	-1.8%	0.6%	22.3%	21.5%
Trade, Transportation and Utilities	-3.8%	6.2%	22.9%	15.7%
Information	44.4%	-6.5%	-5.6%	0.4%
Financial Services	4.7%	12.8%	41.6%	25.2%
Professional and Business Services	-9.1%	-9.2%	5.4%	15.9%
Education and Health Services	-9.8%	-5.1%	18.9%	25.3%
Leisure and Hospitality	18.9%	5.9%	57.0%	47.9%
Other Services	-15.4%	-14.1%	-3.9%	12.1%
Federal Government		-6.9%	6.9%	15.0%
State Government		2.8%	18.7%	16.0%
Local Government		-10.1%	4.2%	16.0%

Business Numbers

	2004	2005	2006	2007	2008
Business starts	47	26	39	22	25
Active businesses	527	525	508	466	462

Major Employers

Ada Technologies	Mfg
Amer Grp plc/Wilson Sporting Goods	Mfg
Hardin County Government	Govt
Hardin Memorial Hospital	Serv
International Paper Co	Mfg
Kenton City Schools	Govt
Ohio Northern University	Serv
Reliance Steel&Alum/Precision Strip Inc	Mfg
Sumitomo Chemical/Durez Corp	Mfg
Triumph Group Inc	Mfg

Residential

Construction

	2005	2006	2007	2008	2009
Total units	39	67	36	21	23
Total valuation (000)	\$4,598	\$9,526	\$5,130	\$2,338	\$3,095
Total single-unit bldgs	39	67	34	16	23
Average cost per unit	\$117,894	\$142,178	\$144,276	\$128,926	\$134,546
Total multi-unit bldg units	0	0	2	5	0
Average cost per unit	\$0	\$0	\$112,500	\$55,000	\$0