

# Ohio County Profiles

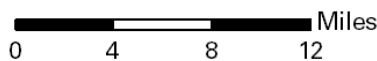


Department of  
Development

Prepared by the Office of Policy, Research and Strategic Planning

## Darke County

**Established:** Act - January 3, 1809  
**2009 Population:** 51,814  
**Land Area:** 599.9 square miles  
**County Seat:** Greenville City  
**Named for:** General William Darke Revolutionary War



### Taxes

Taxable value of real property	\$922,864,540
Residential	\$642,296,610
Agriculture	\$157,819,250
Industrial	\$32,121,630
Commercial	\$90,627,050
Mineral	\$0
Ohio income tax liability	\$28,779,113
Average per return	\$1,149.97

### Land Use/Land Cover

	Percent
Urban (Residential/Commercial/Industrial/Transportation and Urban Grasses)	2.16%
Cropland	83.14%
Pasture	4.49%
Forest	9.58%
Open Water	0.08%
Wetlands (Wooded/Herbaceous)	0.54%
Bare/Mines	0.00%

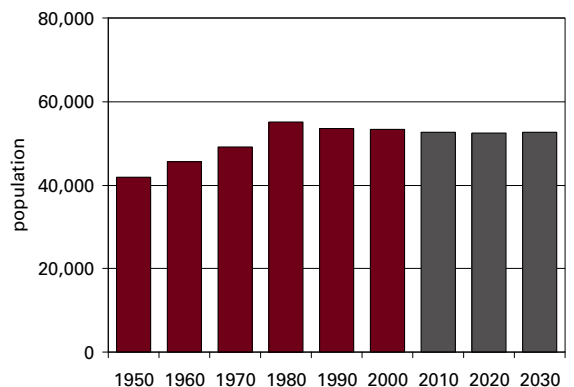
### Largest Areas

	Census 2000	Est. 2009
Greenville city	13,595	12,816
Greenville twp UB	4,530	4,453
Versailles village	2,600	2,503
Adams twp UB	2,076	2,065
Arcanum village	2,074	1,954
Wayne twp UB	1,749	1,741
Union City village	1,769	1,638
Twin twp UB	1,580	1,564
Van Buren twp	1,573	1,553
Washington twp	1,382	1,387

UB: Unincorporated Balance

### Total Population

Census	Estimated
1800	2001
1810	2002
1820	2003
1830	2004
1840	2005
1850	2006
1860	2007
1870	2008
1880	2009
1890	Projected
1900	2010
1910	2020
1920	2030
1930	
1940	
1950	
1960	
1970	
1980	
1990	
2000	



## Population by Race

	Number	Percent
Total Population	53,309	100.0%
White	52,278	98.1%
African-American	173	0.3%
Native American	55	0.1%
Asian	140	0.3%
Pacific Islander	8	0.0%
Other	216	0.4%
Two or More Races	439	0.8%
Hispanic (may be of any race)	420	0.8%
<b>Total Minority</b>	<b>1,223</b>	<b>2.3%</b>

## Educational Attainment

	Number	Percent
Persons 25 years and over	35,206	100.0%
No high school diploma	6,041	17.2%
High school graduate	17,747	50.4%
Some college, no degree	5,876	16.7%
Associate degree	1,994	5.7%
Bachelor's degree	2,297	6.5%
Master's degree or higher	1,251	3.6%

## Family Type by Employment Status

	Number	Percent
Total Families	14,982	100.0%
Married couple, husband and wife in labor force	6,885	46.0%
Married couple, husband in labor force, wife not	2,564	17.1%
Married couple, wife in labor force, husband not	812	5.4%
Married couple, husband and wife not in labor force	2,229	14.9%
Male householder, in labor force	605	4.0%
Male householder, not in labor force	160	1.1%
Female householder, in labor force	1,276	8.5%
Female householder, not in labor force	451	3.0%

## Household Income in 1999

	Number	Percent
Total Households	20,389	100.0%
Less than \$10,000	1,489	7.3%
\$10,000 to \$19,999	2,983	14.6%
\$20,000 to \$29,999	2,909	14.3%
\$30,000 to \$39,999	2,986	14.6%
\$40,000 to \$49,999	2,695	13.2%
\$50,000 to \$59,999	2,074	10.2%
\$60,000 to \$74,999	2,236	11.0%
\$75,000 to \$99,999	1,764	8.7%
\$100,000 to \$149,999	847	4.2%
\$150,000 to \$199,999	149	0.7%
\$200,000 or more	257	1.3%
<b>Median household income</b>	<b>\$39,307</b>	

## Population by Age

	Number	Percent
Total Population	53,309	100.0%
Under 6 years	4,246	8.0%
6 to 17 years	9,724	18.2%
18 to 24 years	4,133	7.8%
25 to 44 years	14,655	27.5%
45 to 64 years	12,434	23.3%
65 years and more	8,117	15.2%
<b>Median Age</b>	<b>37.4</b>	

## Family Type by Presence of Own Children Under 18

	Number	Percent
Total Families	14,982	100.0%
Married-couple families with own children	5,373	35.9%
Male householder, no wife present, with own children	445	3.0%
Female householder, no husband present, with own children	1,048	7.0%
Families with no own children	8,116	54.2%

## Poverty Status in 1999 of Families By Family Type by Presence Of Related Children

	Number	Percent
Total Families	14,982	100.0%
Family income above poverty level	14,089	94.0%
Family income below poverty level	893	6.0%
Married couple, with related children	265	29.7%
Male householder, no wife present, with related children	52	5.8%
Female householder, no husband present, with related children	352	39.4%
Families with no related children	224	25.1%

## Ratio of Income in 1999 To Poverty Level

	Number	Percent
Population for whom poverty status is determined	52,534	100.0%
Below 50% of poverty level	1,709	3.3%
50% to 99% of poverty level	2,503	4.8%
100% to 149% of poverty level	3,622	6.9%
150% to 199% of poverty level	5,918	11.3%
200% of poverty level or more	38,782	73.8%

## Residence in 1995

	Number	Percent
Population 5 years and over	49,747	100.0%
Same house in 1995	32,656	65.6%
Different house, same county	11,496	23.1%
Different county, same state	3,262	6.6%
Different state	2,215	4.5%
Puerto Rico or U.S. islands	0	0.0%
Foreign country	118	0.2%

## Travel Time To Work

	Number	Percent
Workers 16 years and over	25,303	100.0%
Less than 15 minutes	9,189	36.3%
15 to 29 minutes	8,232	32.5%
30 to 44 minutes	3,813	15.1%
45 to 59 minutes	1,719	6.8%
60 minutes or more	1,342	5.3%
Worked at home	1,008	4.0%

**Mean travel time** 22.8 minutes

## Housing Units

	Number	Percent
Total housing units	21,583	100.0%
Occupied housing units	20,419	94.6%
Owner occupied	15,640	72.5%
Renter occupied	4,779	22.1%
Vacant housing units	1,164	5.4%

## Year Structure Built

	Number	Percent
Total housing units	21,583	100.0%
Built 1995 to March 2000	1,336	6.2%
Built 1990 to 1994	981	4.5%
Built 1980 to 1989	1,176	5.4%
Built 1970 to 1979	3,900	18.1%
Built 1960 to 1969	2,618	12.1%
Built 1950 to 1959	2,255	10.4%
Built 1940 to 1949	1,432	6.6%
Built 1939 or earlier	7,885	36.5%

**Median year built** 1957

## Value for Specified Owner-Occupied Housing Units

	Number	Percent
Specified owner-occupied housing units	12,332	100.0%
Less than \$20,000	97	0.8%
\$20,000 to \$39,999	549	4.5%
\$40,000 to \$59,999	1,387	11.2%
\$60,000 to \$79,999	2,473	20.1%
\$80,000 to \$99,999	2,913	23.6%
\$100,000 to \$124,999	2,067	16.8%
\$125,000 to \$149,999	1,235	10.0%
\$150,000 to \$199,999	1,161	9.4%
\$200,000 to \$249,999	238	1.9%
\$250,000 to \$499,999	195	1.6%
\$500,000 to \$999,999	9	0.1%
\$1,000,000 or more	8	0.1%

**Median value** \$91,100

## House Heating Fuel

	Number	Percent
Occupied housing units	20,419	100.0%
Utility gas	7,483	36.6%
Bottled, tank or LP gas	4,363	21.4%
Electricity	5,939	29.1%
Fuel oil, kerosene, etc	1,941	9.5%
Coal, coke or wood	554	2.7%
Solar energy or other fuel	88	0.4%
No fuel used	51	0.2%

## Gross Rent

	Number	Percent
Specified renter-occupied housing units	4,398	100.0%
Less than \$100	14	0.3%
\$100 to \$199	176	4.0%
\$200 to \$299	398	9.0%
\$300 to \$399	907	20.6%
\$400 to \$499	1,114	25.3%
\$500 to \$599	954	21.7%
\$600 to \$699	317	7.2%
\$700 to \$799	92	2.1%
\$800 to \$899	43	1.0%
\$900 to \$999	41	0.9%
\$1,000 to \$1,499	19	0.4%
\$1,500 or more	31	0.7%
No cash rent	292	6.6%

**Median gross rent** \$447

Median gross rent as a percentage of household income in 1999 21.4

## Selected Monthly Owner Costs for Specified Owner-Occupied Housing Units

	Number	Percent
Specified owner-occupied housing units with a mortgage	7,863	100.0%
Less than \$400	434	5.5%
\$400 to \$599	1,653	21.0%
\$600 to \$799	2,309	29.4%
\$800 to \$999	1,598	20.3%
\$1,000 to \$1,249	1,114	14.2%
\$1,250 to \$1,499	398	5.1%
\$1,500 to \$1,999	281	3.6%
\$2,000 to \$2,999	62	0.8%
\$3,000 or more	14	0.2%

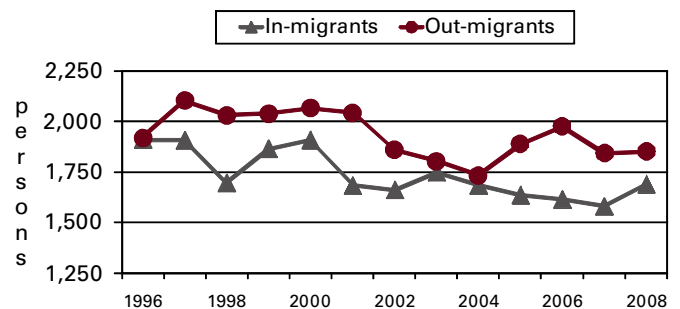
**Median monthly owners cost** \$758

Median monthly owners cost as a percentage of household income 19.1

## Vital Statistics

	Number	Rate
Births / rate per 1,000 women aged 15 to 44	711	74.6
Teen births / rate per 1,000 females 15-19	71	44.2
Deaths / rate per 100,000 population	558	1,068.9
Marriages / rate per 1,000 population	368	7.0
Divorces / rate per 1,000 population	156	3.0

## Migration



## Agriculture

Land in farms (acres)	329,000
Number of farms	1,720
Average size (acres)	191
Total cash receipts	\$273,459,000
Per farm	\$158,988

## Education

Public schools	22
Students (Average Daily Membership)	8,057
Expenditures per student	\$8,561
Student-teacher ratio	17.7
Graduation rate	91.6
Teachers (Full Time Equivalent)	536.5
Non-public schools	2
Students	172
4-year public universities	0
Branches	0
2-year public colleges	0
Private universities and colleges	0
Public libraries (Main / Branches)	4 / 0

## Transportation

Registered motor vehicles	70,389
Passenger cars	37,870
Noncommercial trucks	13,429
Total license revenue	\$2,059,134.61
Interstate highway miles	0.00
Turnpike miles	0.00
U.S. highway miles	50.43
State highway miles	213.36
County, township, and municipal road miles	1,215.61
Commercial airports	1

## Voting

Number of precincts	43
Number of registered voters	34,305
Voted in 2006 election	26,084
Percent turnout	76.0%

## Health Care

Physicians (MDs & DOs)	37
Registered hospitals	1
Number of beds	104
Licensed nursing homes	6
Number of beds	555
Licensed residential care	3
Number of beds	315
Adults with employer-based insurance	64.8%
Children with employer-based insurance	68.9%

## State Parks, Forests, Nature Preserves, And Wildlife Areas

Facilities	3
Acreage	330.32

## Communications

Television stations	0
Radio stations	1
Daily newspapers	1
Circulation	7,000

## Crime

Total crimes reported in Uniform Crime Report	1,051
---	-------

## Finance

FDIC insured financial institutions (HQs)	5
Assets (000)	\$697,175
Branch offices	25
Institutions represented	10

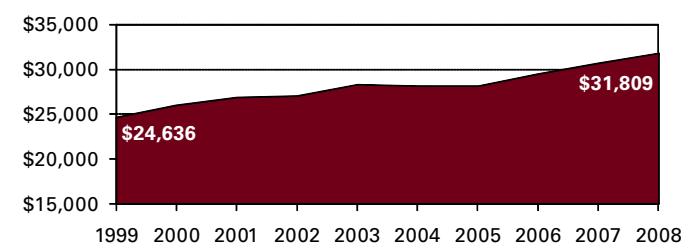
## Transfer Payments

Total transfer payments	\$311,872,000
Payments to individuals	\$303,083,000
Retirement and disability	\$143,001,000
Medical payments	\$114,541,000
Income maintenance (Supplemental SSI, family assistance, food stamps, etc)	\$19,750,000
Unemployment benefits	\$7,502,000
Veterans benefits	\$6,150,000
Federal education and training assistance	\$7,782,000
Other payments to individuals	\$4,357,000
Total personal income	\$1,653,691,000
Dependency ratio	18.9%

## Federal Expenditures

Direct expenditures or obligations	\$301,416,675
Retirement and disability	\$144,667,116
Other direct payments	\$90,832,191
Grant awards	\$51,698,708
Highway planning and construction	\$5,299,770
Temporary assistance to needy families	\$3,418,196
Medical assistance program	\$24,304,533
Procurement contract awards	\$4,997,704
Dept. of Defense	\$725,074
Salary and wages	\$9,220,956
Dept. of Defense	\$0
Other federal assistance	\$145,089,047
Direct loans	\$379,732
Guaranteed loans	\$32,425,772
Insurance	\$112,283,543

## Per Capita Personal Income



**Civilian Labor Force**

	2005	2006	2007	2008	2009
Civilian labor force	28,300	28,000	28,200	28,000	28,100
Employed	26,600	26,400	26,700	26,200	25,000
Unemployed	1,600	1,600	1,600	1,800	3,100
Unemployment rate	5.8	5.6	5.6	6.4	11.2

**Establishments, Employment, and Wages by Sector: 2008**

Industrial Sector	Number of Establishments	Average Employment	Total Wages	Average Weekly Wage
Private Sector	1,176	15,528	\$481,149,243	\$596
Goods-Producing	334	5,719	\$219,296,177	\$737
Natural Resources and Mining	39	571	\$16,806,200	\$566
Constuction	202	946	\$35,589,523	\$724
Manufacturing	93	4,201	\$166,900,454	\$764
Service-Providing	843	9,809	\$261,853,066	\$513
Trade, Transportation and Utilities	314	3,750	\$110,812,408	\$568
Information	17	123	\$3,413,642	\$534
Financial Services	104	754	\$28,183,964	\$719
Professional and Business Services	112	1,150	\$33,548,698	\$561
Education and Health Services	81	2,184	\$64,756,868	\$570
Leisure and Hospitality	112	1,290	\$13,097,496	\$195
Other Services	102	558	\$8,033,990	\$277
Federal Government		117	\$5,145,792	\$844
State Government		49	\$2,086,666	\$815
Local Government		2,177	\$72,425,467	\$640

Private Sector total includes Unclassified establishments not shown.

**Change Since 2003**

Private Sector	-2.5%	-8.0%	5.1%	14.2%
Goods-Producing	-2.3%	-10.2%	-1.6%	9.7%
Natural Resources and Mining	14.7%	-8.6%	5.2%	15.0%
Construction	-5.6%	-18.6%	-2.5%	19.9%
Manufacturing	-1.1%	-8.4%	-2.0%	7.0%
Service-Producing	-2.4%	-6.7%	11.4%	19.3%
Trade, Transportation and Utilities	-3.7%	-2.7%	15.9%	19.1%
Information	13.3%	-14.6%	-2.4%	14.1%
Financial Services	-1.0%	-10.8%	7.8%	20.8%
Professional and Business Services	-5.1%	-35.8%	-15.6%	31.4%
Education and Health Services	12.5%	7.6%	30.5%	21.3%
Leisure and Hospitality	7.7%	2.4%	15.8%	12.7%
Other Services	-17.7%	-5.1%	-12.9%	-8.3%
Federal Government		-4.9%	8.5%	13.9%
State Government		-3.9%	4.2%	7.2%
Local Government		-0.7%	13.1%	13.9%

**Business Numbers**

	2004	2005	2006	2007	2008
Business starts	96	82	109	81	84
Active businesses	1,383	1,387	1,371	1,276	1,243

**Major Employers**

Brethren Retirement Community	Serv
Dick Lavy Trucking	Trans
Ernie Green/Florida Production Eng	Mfg
Greenville City Schools	Govt
Honeywell International	Mfg
Midmark Corp	Mfg
Moriroku Co/Greenville Technology	Mfg
Wal-Mart Stores Inc	Trade
Wayne HealthCare	Serv
Whirlpool Corp/KitchenAid	Mfg

**Residential Construction**

	2005	2006	2007	2008	2009
Total units	169	100	65	56	38
Total valuation (000)	\$19,867	\$15,490	\$13,206	\$10,560	\$6,717
Total single-unit bldgs	103	100	65	48	38
Average cost per unit	\$150,765	\$154,899	\$203,172	\$208,395	\$176,761
Total multi-unit bldg units	66	0	0	8	0
Average cost per unit	\$65,729	\$0	\$0	\$69,625	\$0