

Ohio County Profiles

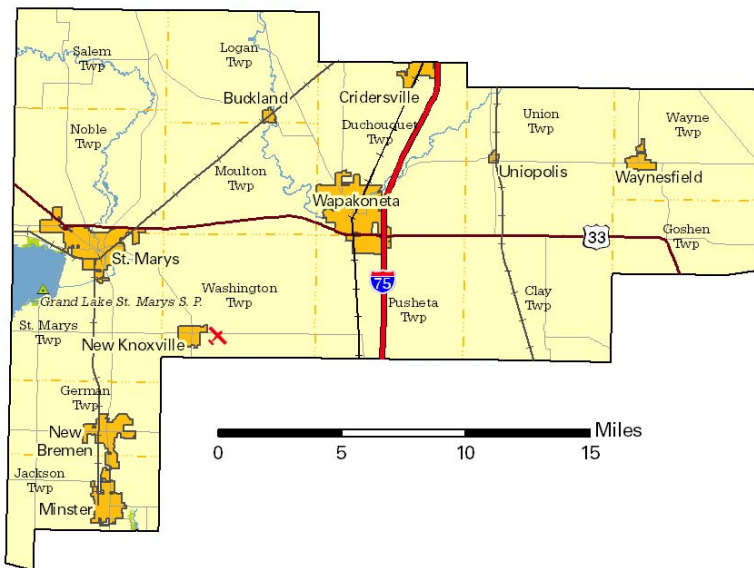


Department of
Development

Prepared by the Office of Policy, Research and Strategic Planning

Auglaize County

Established: Act - February 14, 1848
2009 Population: 46,699
Land Area: 401.3 square miles
County Seat: Wapakoneta City
Named for: French: "Eau" meaning water and "Glaise" meaning clay



Taxes

Taxable value of real property	\$848,498,080
Residential	\$621,076,570
Agriculture	\$88,689,090
Industrial	\$50,482,800
Commercial	\$88,249,620
Mineral	\$0
Ohio income tax liability	\$28,964,763
Average per return	\$1,319.10

Land Use/Land Cover

	Percent
Urban (Residential/Commercial/Industrial/Transportation and Urban Grasses)	7.20%
Cropland	73.27%
Pasture	7.69%
Forest	9.69%
Open Water	1.32%
Wetlands (Wooded/Herbaceous)	0.79%
Bare/Mines	0.04%

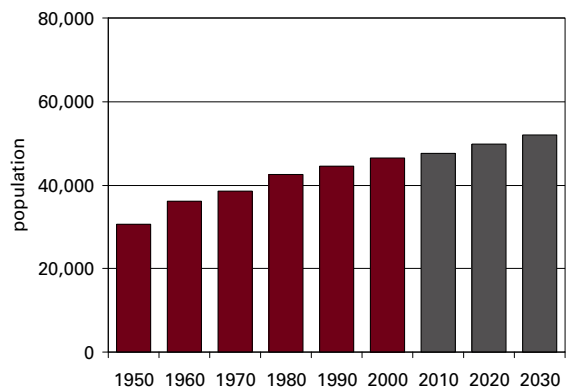
Largest Areas

	Census 2000	Est. 2009
Wapakoneta city	9,548	9,464
St. Marys city	8,358	8,150
St. Marys twp UB	3,457	3,510
New Bremen village	2,921	3,077
Duchouquet twp UB	3,048	3,041
Minster village	2,794	2,775
Cridersville village	1,815	1,714
Moulton twp UB	1,682	1,695
Union twp UB	1,614	1,591
Washington twp UB	1,429	1,427

UB: Unincorporated Balance

Total Population

Census	Estimated
1800	2001 46,566
1810	2002 46,391
1820	2003 46,310
1830	2004 46,388
1840	2005 46,626
1850 11,338	2006 46,512
1860 17,187	2007 46,513
1870 20,041	2008 46,748
1880 25,444	2009 46,699
1890 28,100	Projected
	2010 47,690
	2020 49,740
	2030 52,060



Population by Race

	Number	Percent
Total Population	46,611	100.0%
White	45,645	97.9%
African-American	78	0.2%
Native American	56	0.1%
Asian	195	0.4%
Pacific Islander	0	0.0%
Other	123	0.3%
Two or More Races	514	1.1%
Hispanic (may be of any race)	284	0.6%
Total Minority	1,118	2.4%

Educational Attainment

	Number	Percent
Persons 25 years and over	30,093	100.0%
No high school diploma	4,311	14.3%
High school graduate	14,317	47.6%
Some college, no degree	4,912	16.3%
Associate degree	2,506	8.3%
Bachelor's degree	2,658	8.8%
Master's degree or higher	1,389	4.6%

Family Type by Employment Status

	Number	Percent
Total Families	12,840	100.0%
Married couple, husband and wife in labor force	6,633	51.7%
Married couple, husband in labor force, wife not	2,012	15.7%
Married couple, wife in labor force, husband not	498	3.9%
Married couple, husband and wife not in labor force	1,689	13.2%
Male householder, in labor force	617	4.8%
Male householder, not in labor force	143	1.1%
Female householder, in labor force	889	6.9%
Female householder, not in labor force	359	2.8%

Household Income in 1999

	Number	Percent
Total Households	17,441	100.0%
Less than \$10,000	926	5.3%
\$10,000 to \$19,999	2,095	12.0%
\$20,000 to \$29,999	2,309	13.2%
\$30,000 to \$39,999	2,579	14.8%
\$40,000 to \$49,999	2,369	13.6%
\$50,000 to \$59,999	1,726	9.9%
\$60,000 to \$74,999	2,143	12.3%
\$75,000 to \$99,999	1,927	11.0%
\$100,000 to \$149,999	943	5.4%
\$150,000 to \$199,999	203	1.2%
\$200,000 or more	221	1.3%
Median household income	\$43,367	

Population by Age

	Number	Percent
Total Population	46,611	100.0%
Under 6 years	3,792	8.1%
6 to 17 years	9,063	19.4%
18 to 24 years	3,663	7.9%
25 to 44 years	13,093	28.1%
45 to 64 years	10,289	22.1%
65 years and more	6,711	14.4%
Median Age	36.5	

Family Type by Presence of Own Children Under 18

	Number	Percent
Total Families	12,840	100.0%
Married-couple families with own children	5,005	39.0%
Male householder, no wife present, with own children	461	3.6%
Female householder, no husband present, with own children	803	6.3%
Families with no own children	6,571	51.2%

Poverty Status in 1999 of Families By Family Type by Presence Of Related Children

	Number	Percent
Total Families	12,840	100.0%
Family income above poverty level	12,212	95.1%
Family income below poverty level	628	4.9%
Married couple, with related children	149	23.7%
Male householder, no wife present, with related children	45	7.2%
Female householder, no husband present, with related children	255	40.6%
Families with no related children	179	28.5%

Ratio of Income in 1999 To Poverty Level

	Number	Percent
Population for whom poverty status is determined	45,636	100.0%
Below 50% of poverty level	1,143	2.5%
50% to 99% of poverty level	1,671	3.7%
100% to 149% of poverty level	2,641	5.8%
150% to 199% of poverty level	3,808	8.3%
200% of poverty level or more	36,373	79.7%

Residence in 1995

	Number	Percent
Population 5 years and over	43,498	100.0%
Same house in 1995	27,339	62.9%
Different house, same county	9,807	22.5%
Different county, same state	4,709	10.8%
Different state	1,422	3.3%
Puerto Rico or U.S. islands	2	0.0%
Foreign country	219	0.5%

Travel Time To Work

	Number	Percent
Workers 16 years and over	23,282	100.0%
Less than 15 minutes	10,762	46.2%
15 to 29 minutes	7,345	31.5%
30 to 44 minutes	3,034	13.0%
45 to 59 minutes	640	2.7%
60 minutes or more	683	2.9%
Worked at home	818	3.5%
Mean travel time	18.1 minutes	

Housing Units

	Number	Percent
Total housing units	18,470	100.0%
Occupied housing units	17,376	94.1%
Owner occupied	13,536	73.3%
Renter occupied	3,840	20.8%
Vacant housing units	1,094	5.9%

Year Structure Built

	Number	Percent
Total housing units	18,470	100.0%
Built 1995 to March 2000	1,207	6.5%
Built 1990 to 1994	1,160	6.3%
Built 1980 to 1989	1,741	9.4%
Built 1970 to 1979	3,037	16.4%
Built 1960 to 1969	1,753	9.5%
Built 1950 to 1959	2,397	13.0%
Built 1940 to 1949	1,097	5.9%
Built 1939 or earlier	6,078	32.9%
Median year built	1959	

Value for Specified Owner-Occupied Housing Units

	Number	Percent
Specified owner-occupied housing units	11,191	100.0%
Less than \$20,000	40	0.4%
\$20,000 to \$39,999	360	3.2%
\$40,000 to \$59,999	1,373	12.3%
\$60,000 to \$79,999	2,395	21.4%
\$80,000 to \$99,999	2,498	22.3%
\$100,000 to \$124,999	1,750	15.6%
\$125,000 to \$149,999	999	8.9%
\$150,000 to \$199,999	1,200	10.7%
\$200,000 to \$249,999	298	2.7%
\$250,000 to \$499,999	249	2.2%
\$500,000 to \$999,999	29	0.3%
\$1,000,000 or more	0	0.0%
Median value	\$90,600	

House Heating Fuel

	Number	Percent
Occupied housing units	17,376	100.0%
Utility gas	9,411	54.2%
Bottled, tank or LP gas	3,662	21.1%
Electricity	3,127	18.0%
Fuel oil, kerosene, etc	675	3.9%
Coal, coke or wood	406	2.3%
Solar energy or other fuel	87	0.5%
No fuel used	8	0.0%

Gross Rent

	Number	Percent
Specified renter-occupied housing units	3,632	100.0%
Less than \$100	54	1.5%
\$100 to \$199	150	4.1%
\$200 to \$299	289	8.0%
\$300 to \$399	703	19.4%
\$400 to \$499	915	25.2%
\$500 to \$599	708	19.5%
\$600 to \$699	322	8.9%
\$700 to \$799	49	1.3%
\$800 to \$899	46	1.3%
\$900 to \$999	2	0.1%
\$1,000 to \$1,499	88	2.4%
\$1,500 or more	49	1.3%
No cash rent	257	7.1%
Median gross rent	\$457	
Median gross rent as a percentage of household income in 1999	19.2	

Selected Monthly Owner Costs for Specified Owner-Occupied Housing Units

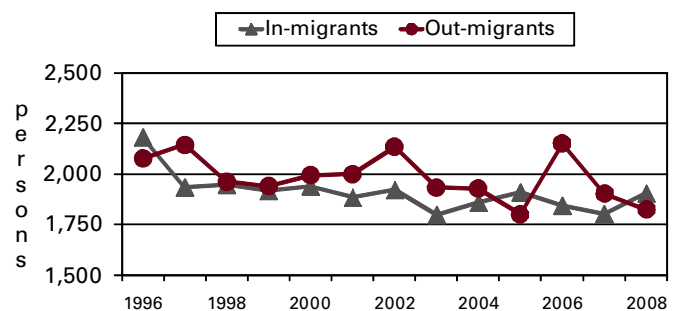
	Number	Percent
Specified owner-occupied housing units with a mortgage	7,207	100.0%
Less than \$400	289	4.0%
\$400 to \$599	1,238	17.2%
\$600 to \$799	1,947	27.0%
\$800 to \$999	1,500	20.8%
\$1,000 to \$1,249	1,209	16.8%
\$1,250 to \$1,499	491	6.8%
\$1,500 to \$1,999	403	5.6%
\$2,000 to \$2,999	99	1.4%
\$3,000 or more	31	0.4%
Median monthly owners cost	\$816	

Median monthly owners cost as a percentage of household income 18.7

Vital Statistics

	Number	Rate
Births / rate per 1,000 women aged 15 to 44	623	70.9
Teen births / rate per 1,000 females 15-19	59	38.7
Deaths / rate per 100,000 population	505	1,087.7
Marriages / rate per 1,000 population	315	6.7
Divorces / rate per 1,000 population	155	3.3

Migration



Agriculture

Land in farms (acres)	211,000
Number of farms	990
Average size (acres)	213
Total cash receipts	\$98,672,000
Per farm	\$98,672

Education

Public schools	19
Students (Average Daily Membership)	7,953
Expenditures per student	\$8,392
Student-teacher ratio	17.5
Graduation rate	95.0
Teachers (Full Time Equivalent)	508.6
Non-public schools	2
Students	196
4-year public universities	0
Branches	0
2-year public colleges	0
Private universities and colleges	0
Public libraries (Main / Branches)	2 / 5

Transportation

Registered motor vehicles	57,486
Passenger cars	33,922
Noncommercial trucks	9,564
Total license revenue	\$1,595,657.48
Interstate highway miles	12.52
Turnpike miles	0.00
U.S. highway miles	29.20
State highway miles	169.64
County, township, and municipal road miles	822.18
Commercial airports	1

Voting

Number of precincts	40
Number of registered voters	33,760
Voted in 2006 election	23,894
Percent turnout	70.8%

Health Care

Physicians (MDs & DOs)	39
Registered hospitals	1
Number of beds	140
Licensed nursing homes	9
Number of beds	556
Licensed residential care	5
Number of beds	293
Adults with employer-based insurance	67.2%
Children with employer-based insurance	81.8%

State Parks, Forests, Nature Preserves, And Wildlife Areas

Facilities	3
Acreage	3,059.76

Communications

Television stations	0
Radio stations	0
Daily newspapers	2
Circulation	10,824

Crime

Total crimes reported in Uniform Crime Report	370
---	-----

Finance

FDIC insured financial institutions (HQs)	3
Assets (000)	\$507,547
Branch offices	23
Institutions represented	9

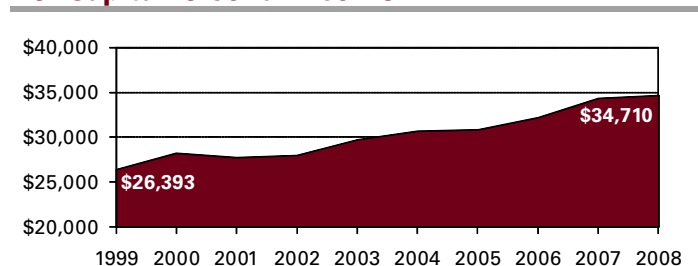
Transfer Payments

Total transfer payments	\$275,693,000
Payments to individuals	\$267,823,000
Retirement and disability	\$111,941,000
Medical payments	\$122,397,000
Income maintenance (Supplemental SSI, family assistance, food stamps, etc)	\$13,802,000
Unemployment benefits	\$5,608,000
Veterans benefits	\$4,197,000
Federal education and training assistance	\$6,968,000
Other payments to individuals	\$2,910,000
Total personal income	\$1,622,617,000
Dependency ratio	17.0%

Federal Expenditures

Direct expenditures or obligations	\$249,377,586
Retirement and disability	\$112,024,188
Other direct payments	\$87,212,755
Grant awards	\$27,602,064
Highway planning and construction	\$5,573,935
Temporary assistance to needy families	\$2,988,716
Medical assistance program	\$13,939,645
Procurement contract awards	\$7,066,630
Dept. of Defense	\$4,572,729
Salary and wages	\$15,471,949
Dept. of Defense	\$5,334,000
Other federal assistance	\$106,692,956
Direct loans	\$379,693
Guaranteed loans	\$29,403,502
Insurance	\$76,909,761

Per Capita Personal Income



Civilian Labor Force

	2005	2006	2007	2008	2009
Civilian labor force	26,200	27,100	27,100	26,900	26,800
Employed	25,000	26,000	25,900	25,400	24,000
Unemployed	1,200	1,100	1,200	1,500	2,800
Unemployment rate	4.4	4.1	4.4	5.4	10.5

Establishments, Employment, and Wages by Sector: 2008

Industrial Sector	Number of Establishments	Average Employment	Total Wages	Average Weekly Wage
Private Sector	950	17,257	\$617,655,084	\$688
Goods-Producing	212	7,873	\$375,804,584	\$918
Natural Resources and Mining	10	64	\$2,302,686	\$687
Constuction	104	981	\$37,589,817	\$737
Manufacturing	98	6,828	\$335,912,081	\$946
Service-Providing	738	9,384	\$241,850,500	\$496
Trade, Transportation and Utilities	225	3,192	\$94,112,389	\$567
Information	13	235	\$8,279,260	\$677
Financial Services	115	575	\$17,733,549	\$594
Professional and Business Services	86	800	\$22,554,456	\$542
Education and Health Services	102	2,276	\$64,945,736	\$549
Leisure and Hospitality	96	1,394	\$13,988,884	\$193
Other Services	102	911	\$20,220,996	\$427
Federal Government		126	\$5,893,703	\$899
State Government		120	\$5,760,746	\$922
Local Government		2,221	\$76,385,633	\$661

Private Sector total includes Unclassified establishments not shown.

Change Since 2003

Private Sector	-1.6%	7.9%	22.3%	13.3%
Goods-Producing	-8.2%	5.1%	18.1%	12.4%
Natural Resources and Mining	11.1%	-8.6%	18.4%	27.7%
Construction	-16.8%	1.0%	20.5%	19.3%
Manufacturing	0.0%	5.9%	17.8%	11.3%
Service-Producing	0.5%	10.4%	29.5%	17.5%
Trade, Transportation and Utilities	-8.5%	10.2%	24.2%	12.7%
Information	0.0%	9.8%	28.3%	16.5%
Financial Services	2.7%	0.2%	16.7%	16.7%
Professional and Business Services	11.7%	11.6%	19.9%	7.5%
Education and Health Services	22.9%	27.6%	47.6%	15.8%
Leisure and Hospitality	-4.0%	-11.8%	5.9%	19.9%
Other Services	-1.0%	23.8%	52.0%	22.7%
Federal Government		31.3%	63.1%	24.5%
State Government		-10.4%	4.4%	16.7%
Local Government		1.5%	18.2%	16.4%

Business Numbers

	2004	2005	2006	2007	2008
Business starts	48	46	69	49	45
Active businesses	978	989	970	948	926

Major Employers

Crown Equipment Corp	Mfg
Danone Group/Dannon Co	Mfg
Veyance Technologies Inc	Mfg
Hitachi Metals/AAP St. Mary's Corp	Mfg
Joint Township Dist Memorial Hosp	Serv
Minster Machine Co	Mfg
Setex Inc	Mfg
St Mary's City Schools	Govt
Wapakoneta City Schools	Govt

Residential Construction

	2005	2006	2007	2008	2009
Total units	190	193	142	105	67
Total valuation (000)	\$25,483	\$27,774	\$23,673	\$18,089	\$11,205
Total single-unit bldgs	174	166	134	100	60
Average cost per unit	\$138,291	\$162,541	\$170,735	\$179,240	\$182,747
Total multi-unit bldg units	16	27	8	5	7
Average cost per unit	\$88,750	\$29,333	\$99,375	\$33,000	\$34,286